

Group **SFA**

EXPORT
2012



A **WC**



A **Bathroom**



A **Kitchen**

**Anywhere
you want!**

Thanks to this brochure and the selector guide you will be able to select the right product for your application, and soon you will experience why millions of satisfied customers recognize **SFA** as a leading manufacturer of high quality innovative products and why **SFA** is the problem solver for renovation and construction projects.

You should only trust **SFA** with more than 54 years experience to add value and convenience to the home without any major construction.

PRODUCT SELECTOR GUIDE



page

	WC	Wall-hung toilet	Washbasin	Bidet	Shower	Bathtub	Dishwasher	Washing machine	Refrigerated display	Air conditioner	Boiler	Water saving 1.8 L / 3 L	ECO+
6 SANIFLO	●												
7 SANITOP	●		●										
8 SANIPRO XR	●		●	●	●								
9 SANISLIM	●		●	●	●								
10 SANIPLUS	●		●	●	●								
11 SANIPACK		●	●	●	●								
12 SANISHOWER			●	●	●								
13 SANIVITE			●	●	●	●	●	●					
14 SANIWALL PRO		●	●	●	●								
15 SANICOMPACT 43	●		●									●	
16 SANICOMPACT PRO	●		●	optional*								●	
17 SANICOMPACT COMFORT		●		optional*								●	
18 DESCALER - SANIALARM													
20 SANIBEST PRO	●		●	●	●								
21 SANISPEED			●	●	●	●	●	●					
22 SANICOM 1			●	●	●	●	●	●					
23 SANICOM 2			●	●	●	●	●	●					
24 SANICUBIC 1	●	●	●	●	●	●	●	●					
26 SANICUBIC 2 CLASSIC & PRO NEW	●	●	●	●	●	●	●	●					
28 SANICONDENS PRO NEW									●	●	●		
29 SANICONDENS CLIM MINI NEW										●			
29 SANICONDENS CLIM PACK										●			
30 SANICONDENS CLIM DECO NEW										●			
32 SANIAACCESS 1 NEW	●												
33 SANIAACCESS 2 NEW	●		●										
34 SANIAACCESS 3 NEW	●		●	●	●								
35 SANIAACCESS PUMP NEW			●	●	●	●	●	●					

* 2 versions available :
 - ECO+ version (1.8 L / 3 l). This version does not allow a wash basin connection.
 - Wash basin version (dual flush 3.8L / 5L of water).

5 GOOD REASONS FOR CHOOSING SFA

Before

50 years of expertise

1 The **SFA Group** as inventor, designer and manufacturer, has had a very strong presence in the sanitary appliances market for over 50 years, at first in France and then all over the world. It is now the leading brand for small-bore sanitary macerators and pumps. The Group's primary area of investment is its Research & Development department where year in and year out dozens of engineers develop today and tomorrow's products, constantly simplifying installation work and guaranteeing optimum quality.

Quality

2 Two-year guarantee and compliance with standards

SFA pumps and macerators are manufactured in France, and comply with the new European and international standards now in force (EN 12050-3, EN 12050-2 and EN 12050-1). The factory in which they are manufactured is quality certified to ISO 9001:2000 (issued by AFAQ, the French Quality Certification Association).



After

Easy installation

3 **SFA** macerator provides the ideal solution for installing sanitary appliances almost anywhere with a minimum of construction work. **SFA** macerator/ pump allows you to install complete wc and showering facilities where it is impossible to do so using traditional plumbing methods (eg remote from the drain, in basements etc.). It is very easy to install and to service.

Silence and safety

4 To provide a 10-decibel reduction in the noise levels transmitted, the SFA range of macerator pumps has now been fitted on resilient mounts that absorb the resonant vibrations when the equipment is operating. This means that the noise levels transmitted are very low, and almost indistinguishable from background noise.



Peace of mind

5 Via its network of subsidiaries and exclusive distributors, SFA provides an After-Sales Service in all the countries where its macerators and pumps are sold.

Grey water or macerator pump?

The **SFA** range of small macerator pumps enables you to add an extra shower room, kitchen or utility facilities almost anywhere.

This includes those "hard to plumb" locations that would be impractical or expensive using conventional large-bore, gravity drained discharge pipework.

MACERATOR PUMPS

If you want to create an additional WC or a new bathroom, the **SFA** macerator pump should be used. A macerator is a high speed motor with blades that shreds organic and waste paper matter into a fine slurry so that it can be evacuated through small bore pipe work.

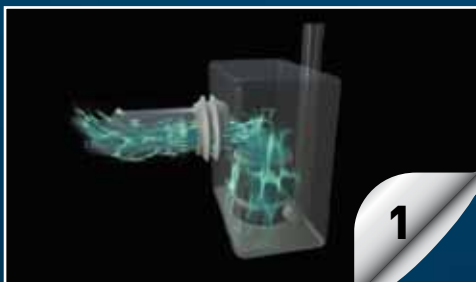
With a range of macerating pumps capable of accepting waste from 2, 3, 4 or even 5 fixtures, your renovations won't rely on any major structural work as **SFA** pumps can be installed on top of any finished floor, even if it is located below the existing sewer lines. Recent times have seen major technological improvements on our products, based on hydraulic efficiency and noise reduction so that the macerator pumps in operation are almost imperceptible.

GREY WATER PUMPS

Grey waste water is produced from general domestic and office processes such as dish or glass washing, bathing and laundry duties.

Our grey waste water pump range is ideal for renovating either your home or office, as each pump allows you to install additional facilities such as kitchens, kitchenettes, laundries, and even shower and wash facilities anywhere you choose, even if it is remote from or below the existing sewer line. With the ability to pump grey waste water without the need to rely on traditional gravity fed plumbing methods, you won't need to cut concrete, or interrupt neighbours in an office or apartment situation, as waste lines can be concealed in wall cavities and ceiling voids.

Operating principle of the SFA macerating System



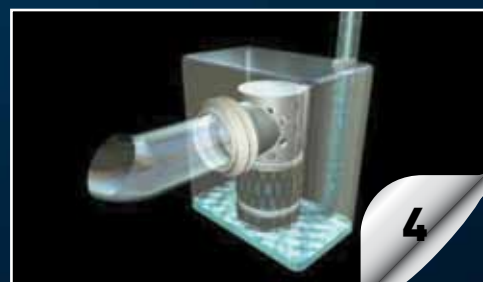
The toilet is flushed, the water level rises and the SFA grinder motor cuts in automatically.



The blades driven by the motor grind the contents up into tiny particles in 3 or 4 seconds.



The finely ground particles are pumped out through a standard pipe just 22 or 32 mm in diameter.



The tank is empty (apart from the water seal) and the system is ready for use again.



DOMESTIC RANGE

Imagine the flexibility of designing without restrictions. Now, when thinking about a renovation or new construction project you can maximise the design by positioning additional wet facilities anywhere you choose, cost effectively and easily.

The macerators and pumps are widely used in residential applications. They make it possible to install a WC, complete bathroom, kitchen or laundry anywhere in 1&2 family houses, apartments, holiday homes, pool cabanas...



The original macerator pump for an extra WC almost anywhere.
SANIFLO® Silence is suitable for use in a basement or loft extension or in any home improvement where conventional large bore pipework is impractical.

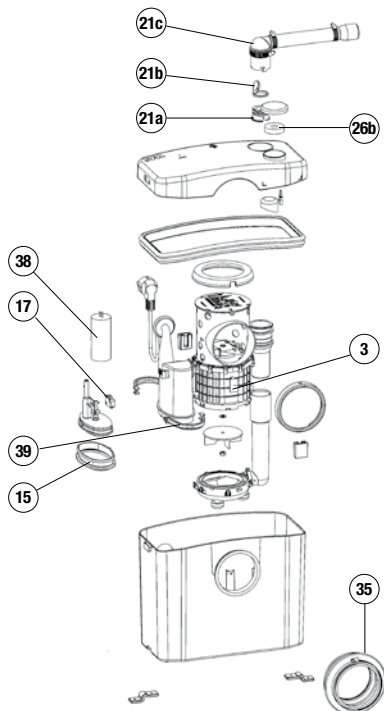
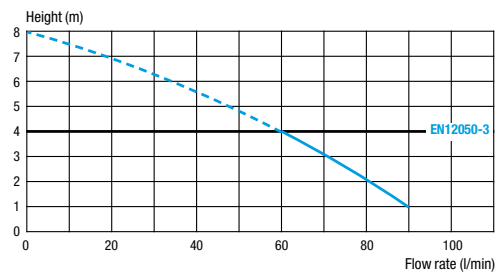
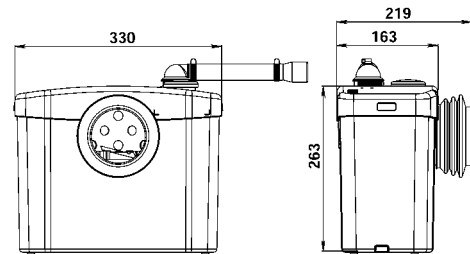


Optional



Vertical and Horizontal discharge: ↑ 4 m → 100 m

- Recommended waste pipe diameter: 22 to 32 mm
- Normal operating temperature: 35°C
- Index of protection: IP44
- Electrical power supply: 220-240 V / 50 Hz
- Motor power rating: 400 W
- Non-return valve
- Can be equipped with **SANIALARM®**



SANITOP®

SANITOP® Silence

is used to create an additional half bathroom. This unit offers a quiet macerating pumping system that's ideal to install a toilet with a wash basin.



5 m
100 m



DOMESTIC RANGE

Recommended waste pipe diameter: 22 to 32 mm

Normal operating temperature: 35°C

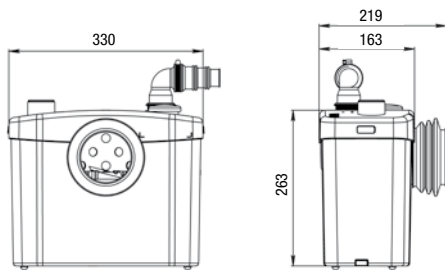
Index of protection: IP44

Electrical power supply: 220-240 V / 50 Hz

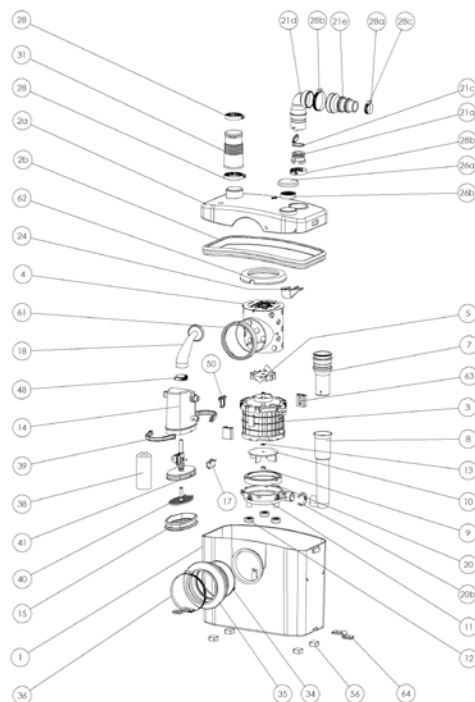
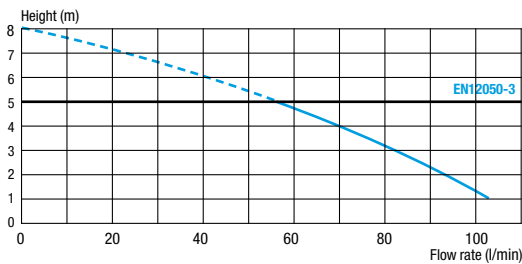
Motor power rating: 400 W

Non-return valve

Can be equipped with **SANIALARM®**



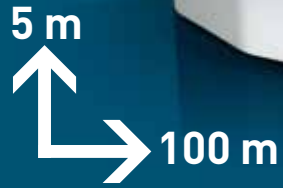
Vertical and Horizontal discharge: ↑ 5 m → 100 m



SANIPRO® XR

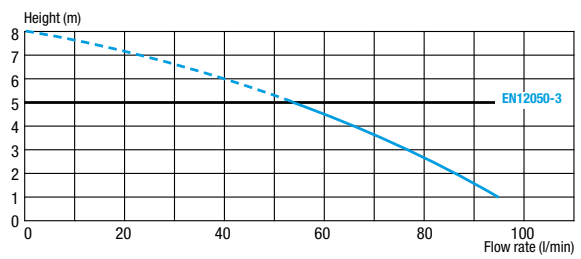
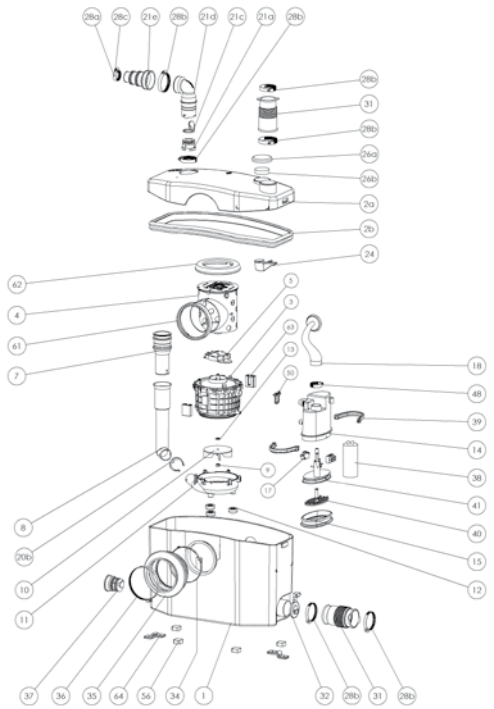
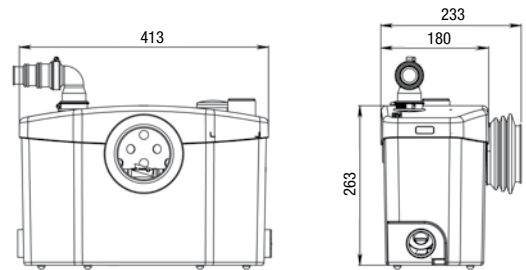
SANIPRO® XR

Silence is used to add a complete bathroom. It takes waste from a toilet, shower, wash basin and bidet.



Vertical and Horizontal discharge: ↑ 5 m → 100 m

Recommended waste pipe diameter: 22 to 32 mm
Normal operating temperature: 35°C
Index of protection: IP44
Electrical power supply: 220-240 V / 50 Hz
Motor power rating: 400 W
Non-return valve
Can be equipped with SANIALARM®



SANISLIM®

A macerator pump specifically designed for use with slimline sanitaryware.

SANISLIM® takes waste from a WC, and waste water from a wash basin, shower or bidet.



2,5 m
40 m



Optional



DOMESTIC RANGE

Recommended waste pipe diameter: 22 to 32 mm

Normal operating temperature: 35°C

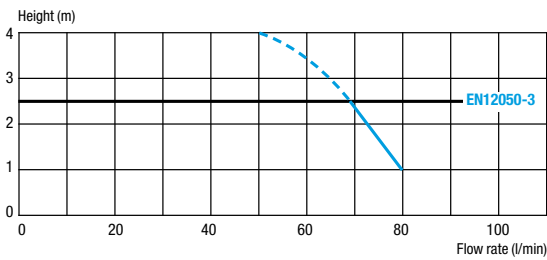
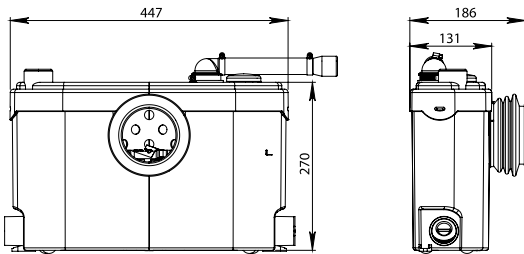
Index of protection: IP44

Electrical power supply: 220-240 V / 50 Hz

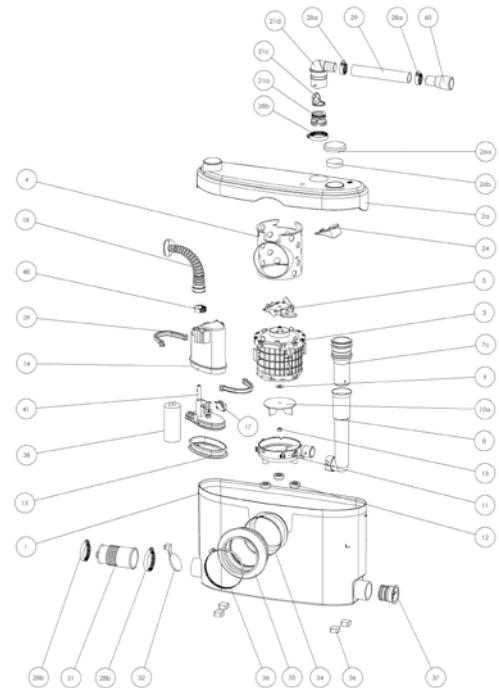
Motor power rating: 400 W

Non-return valve

Can be equipped with **SANIALARM®**

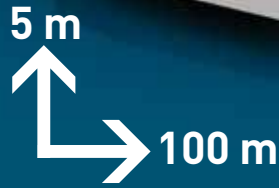


Vertical and Horizontal discharge: ↑ 2,5 m → 40 m



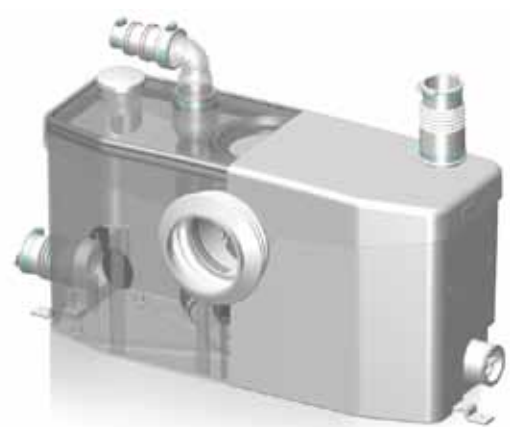
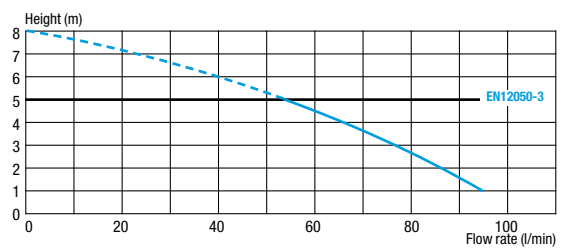
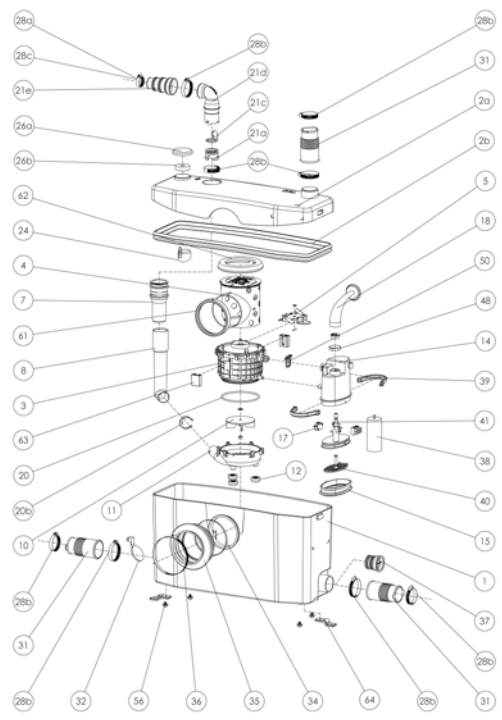
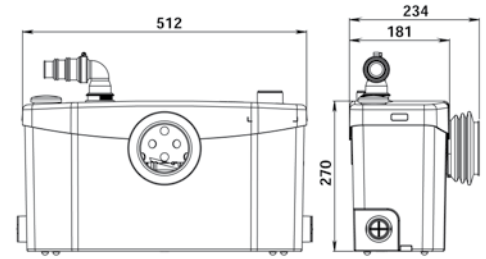


Its high capacity tank enables **SANIPLUS® Silence** to pump away large quantities of waste waters from the bathroom. Its specific motor enables long-term running.



Vertical and Horizontal discharge: ↑ 5 m → 100 m

Recommended waste pipe diameter: 22 to 32 mm
Normal operating temperature: 35°C
Index of protection: IP44
Electrical power supply: 220-240 V / 50 Hz
Motor power rating: 400 W
Non-return valve
Can be equipped with SANIALARM®



SANIPACK®

A macerator pump specifically designed to be installed directly and discreetly in the wall for wall hung sanitaryware.



5 m
100 m

Ideal for



Wall-hung WCs



Optional



DOMESTIC RANGE

Recommended waste pipe diameter: 22 to 32 mm

Normal operating temperature: 35°C

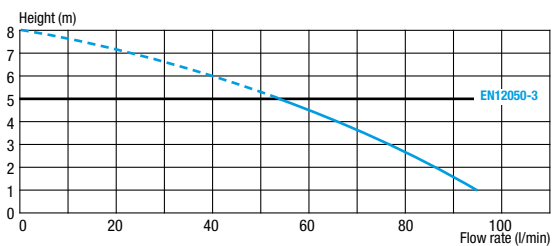
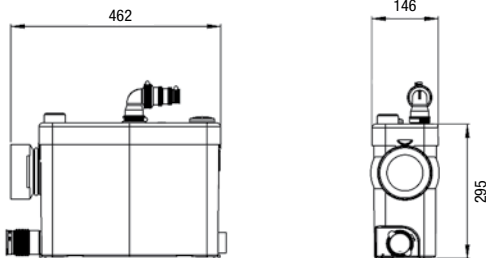
Index of protection: IP44

Electrical power supply: 220-240 V / 50 Hz

Motor power rating: 400 W

Non-return valve

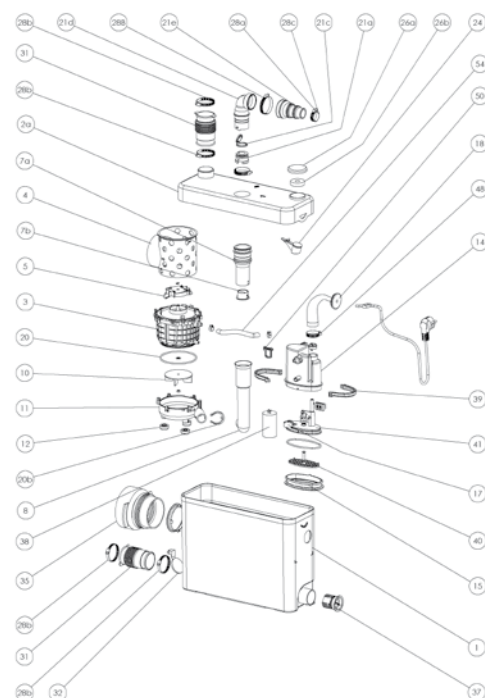
Can be equipped with **SANIALARM®**



Anticipate a removable trapdoor for an easy access to the macerator.

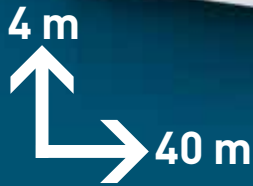


Vertical and Horizontal discharge: ↑ 5 m → 100 m



SANISHOWER®

Its small dimensions and low level start make **SANISHOWER®** perfectly adapted to be integrated under a shower tray or discreetly within a piece of furniture. The second inlet gives the possibility to install a wash basin or bidet.



Vertical and Horizontal discharge: ↑ 4 m → 40 m

Possible connections: wash basin, shower, bidet

Recommended waste pipe diameter: 32 mm

Electrical power supply: 220-240 V / 50 Hz

Motor power rating: 250 W

Current consumption: 1,3 A

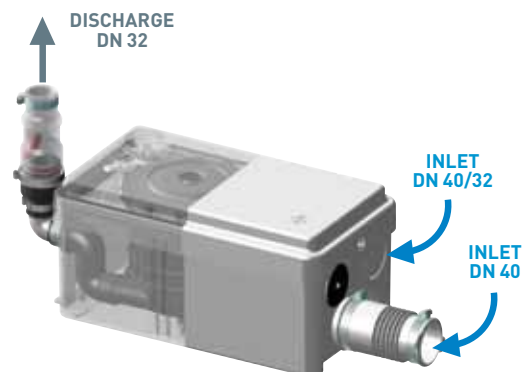
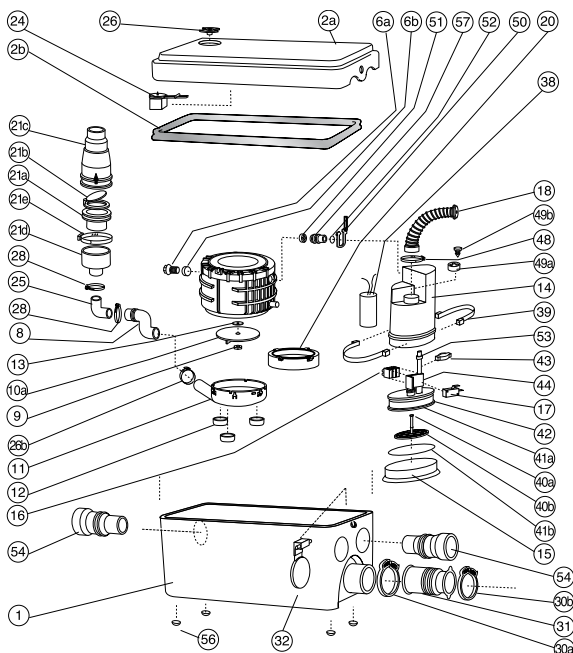
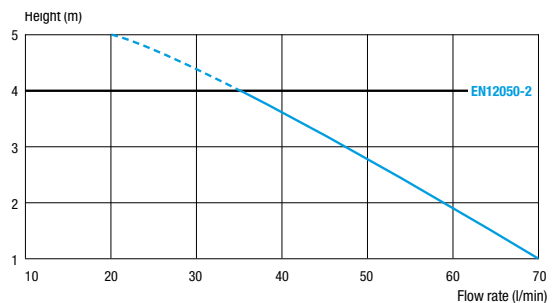
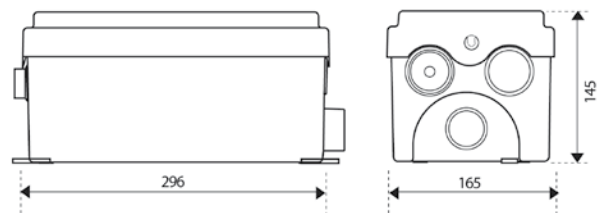
Electrical classification: I

Normal operating temperature: 35°C

Index of protection: IP44

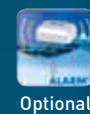
Weight: 3,5 kg

Non-return valve



SANIVITE®

The **SANIVITE® Silence** is a powerful pump with four inlets for connection to sink and appliances. Specially designed to deal with the hot soapy pumped waste water, Sanivite represents the perfect solution to install a kitchen or a sink on the ground level or in the basement.



DOMESTIC RANGE

Possible connections: wash basin, shower, bidet, bathtub, sink, dishwasher, washing machine

Recommended waste pipe diameter: 32 mm

Normal operating temperature: 35°C

Maximum acceptable waste water temperature: 60° (max 5 min)

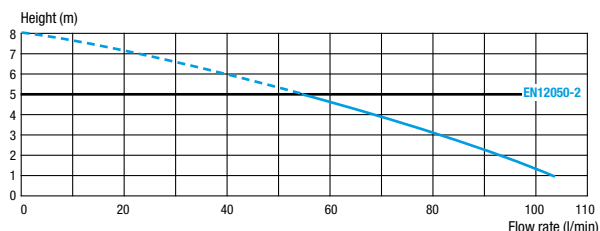
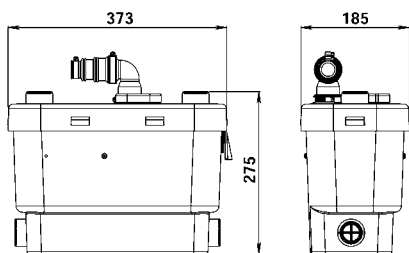
Index of protection: IP44

Electrical power supply: 220-240 V / 50 Hz

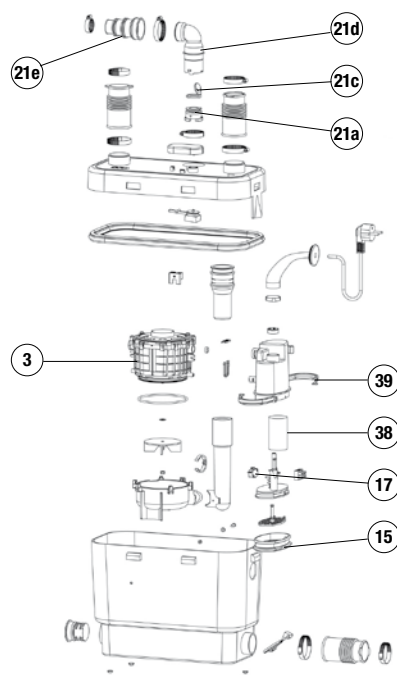
Motor power rating: 400 W

Non-return valve

Can be equipped with **SANIALARM®**



Vertical and Horizontal discharge: ↑ 5 m → 50 m



SANIWALL® Pro

SANIWALL® PRO is a WC frame complete with a built-in concealed cistern and macerator unit. The frame system is compatible with all wall-hung toilets. In addition to taking waste and water from a toilet, there are three further entry points (two low and one high) allowing a wash basin, bidet and shower to drain through.

5 m
100 m



Vertical and Horizontal discharge: ↑ 5 m → 100 m

Recommended waste pipe diameter: 22 to 32 mm

Normal operating temperature: 35°C

Index of protection: IP44

Electrical power supply: 220-240 V / 50 Hz

Motor power rating: 400 W

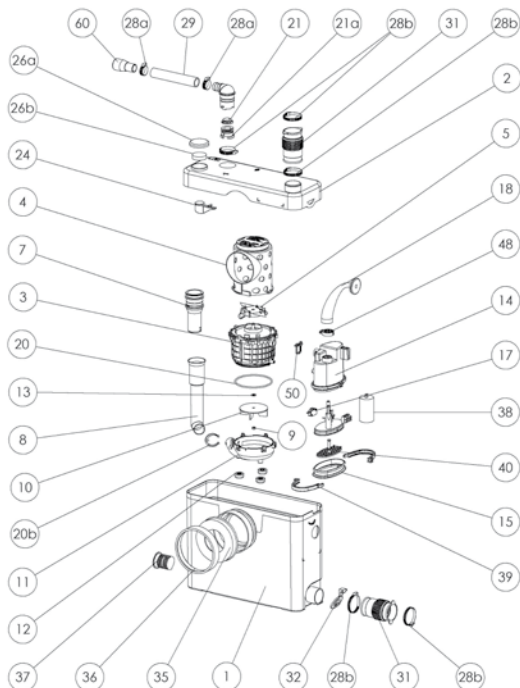
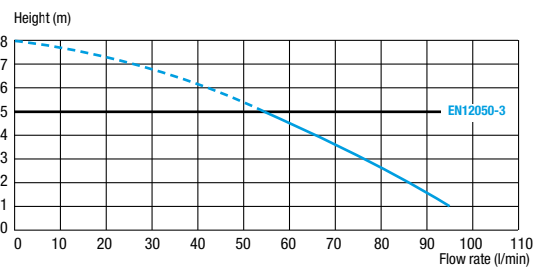
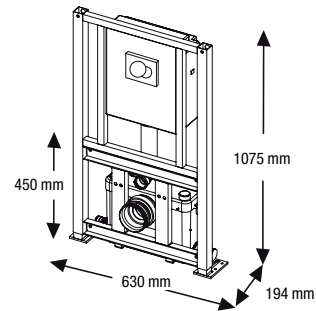
Cistern: dual flush 3/6 L

Included and removable non return valve

Adjustable feet

Fixing kit included

Can be equipped with **SANIALARM®**



The bottom part is removable for an easy access to the macerator.

SANICOMPACT® 43

SANICOMPACT® 43

is the most compact cisternless toilet with built-in macerator and is ideal for fitting into tight spots where conventional toilets can't go : studios, cupboards, as a replacement for a bidet, under a staircase.



3 m
30 m



or



QUIET



DOMESTIC RANGE

SANICOMPACT 43 is available in two versions

Version 1 ECO+

- Quietness
- Dual flush system: 1,8 L / 3 L
- Does not allow a wash basin connection

Version 2 Wash basin

- Dual flush system: 3,8 L / 5 L
- Allows a wash basin connection

Recommended waste pipe diameter: 32 mm

Normal operating temperature: 35°C

Electrical power supply: 220-240 V / 50 Hz

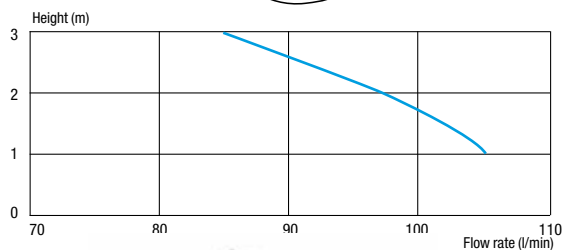
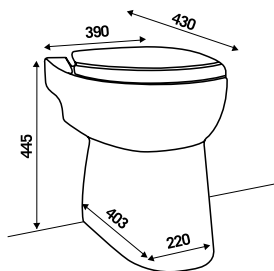
Motor power rating: 550 W (version 1 ECO+)
800 W (version 2 Wash basin)

Non-return valve • Bowl with anti-limescale coating

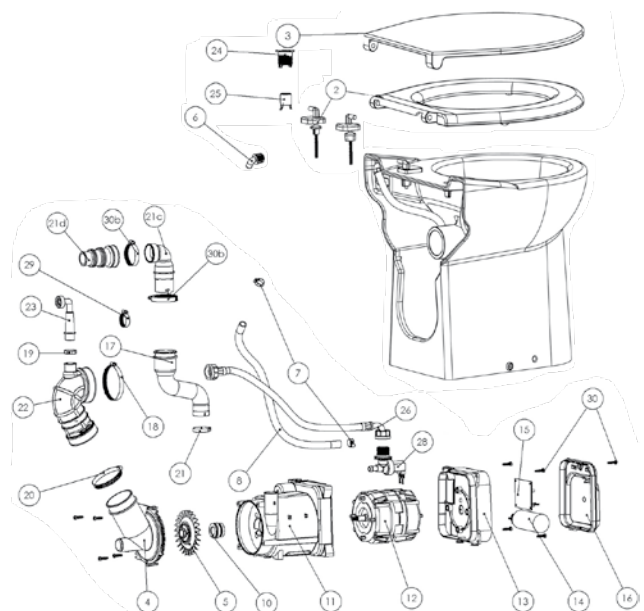
Toilet seat supplied



Vertical and Horizontal discharge: ↑ 3 m → 30 m



SANICOMPACT® 43 ECO+



SANICOMPACT® Pro

The ergonomic and stylishly designed **SANICOMPACT® Pro** features a regular, comfortable bowl and is supplied with a standard seat. Like all **SFA** products, it is easy to install and would be ideal as a replacement for a bidet.



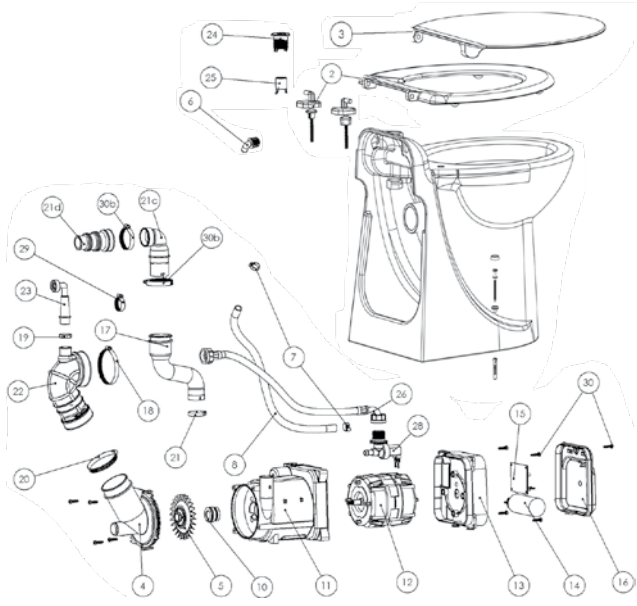
or



Vertical and Horizontal discharge: ↑ 3 m → 30 m



SANICOMPACT® PRO ECO+



SANICOMPACT® Pro is available in two versions

Version 1 ECO+

- Quietness
- Dual flush system: 1,8 L / 3 L
- Does not allow a wash basin connection

Version 2 Wash basin

- Dual flush system: 3,8 L / 5 L
- Allows a wash basin connection

Recommended waste pipe diameter: 32 mm

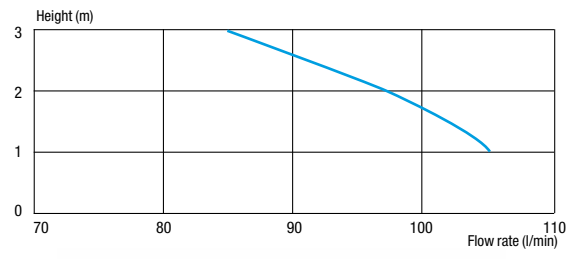
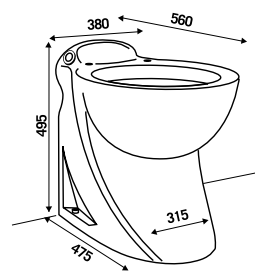
Normal operating temperature: 35°C

Electrical power supply: 220-240 V / 50 Hz

Motor power rating: 550 W (version 1 ECO+)
800 W (version 2 Wash basin)

Non-return valve • Bowl with anti-limescale coating

Toilet seat supplied



SANICOMPACT® Comfort



SANICOMPACT® Comfort

is a wall hung toilet with a built-in macerator. With its sleek design and economical and ecological dual flush system, this is a truly modern toilet that will integrate into any bathroom.

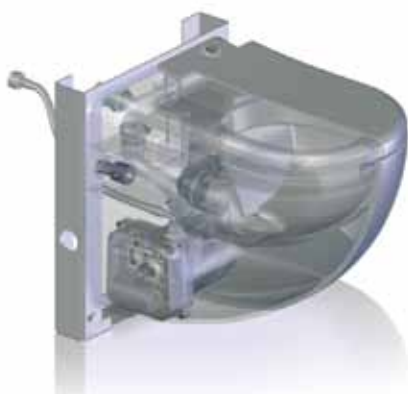
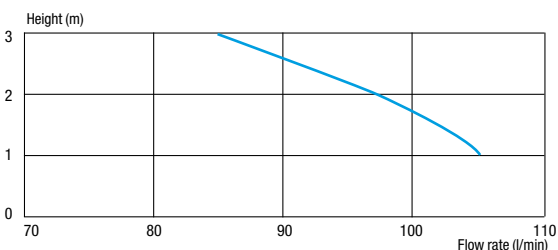
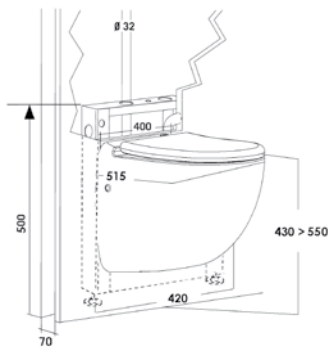
SANICOMPACT® Comfort comes with a detachable soft closing seat.

3 m
30 m

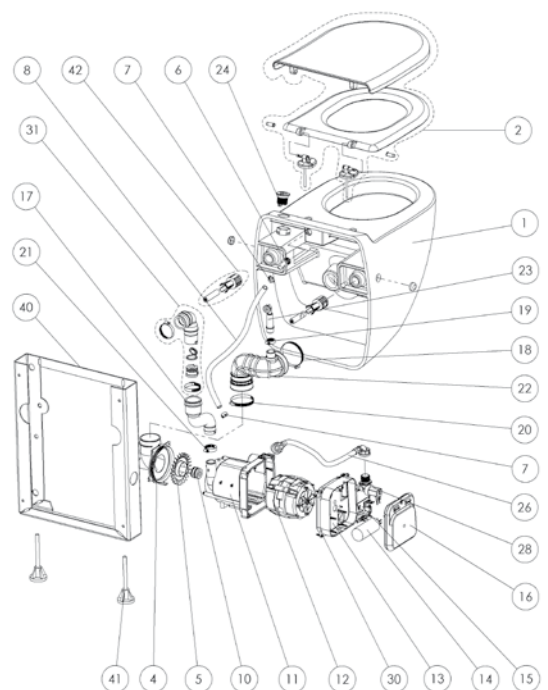


DOMESTIC RANGE

- Recommended waste pipe diameter: 32 mm
- Silence
- Water consumption: ECO+ system : 1,8 L / 3 L
- Normal operating temperature: 35°C
- Electrical power supply: 220-240 V / 50 Hz
- Motor power rating: 550 W
- Non-return valve
- Bowl with anti-limescale coating
- Soft closing seat and built in support frame supplied.



Vertical and Horizontal discharge: ↑ 3 m → 30 m



ALL RANGES ACCESSORIES

SANIALARM®

Its original design, the fruit of several months of research by the **SFA** engineering department, reflects our policy of continual product improvement across the range.

Occasional power failures, or a build-up of limescale deposits in older units (that are not regularly descaled), will cause a surcharge of water in the unit.

To deal with such unforeseen problems, the **SFA** solution is to provide an immediate warning to stop using the unit and rectify the problem.

SANIALARM® has a level pressure switch that triggers an alarm fixed on the top of the **SFA** unit if the volume of water exceeds the maximum allowed level. The alarm then emits a continuous sound, until it is switched off and the problem rectified.

SANIALARM® is battery operated and can be fitted on all models in the adaptable **SFA** macerator range, including **SANISPEED®** and **SANIVITE®** pumps. It is easy to fit.



SANIALARM® should be fitted onto the lid of the SFA unit

Buzzer

Works from two 1,5V batteries (not supplied)



SANIALARM® is available as an option on all the models in the catalogue marked with this pictogram.

SANIALARM® warns you if the water in the macerator rises to an unusually high level

DESCALER CLEANSER



WC WITH BUILT-IN MACERATOR PUMP



ADAPTABLE MACERATOR

- Ultra-concentrated phosphoric acid formula
- Specially developed to avoid damaging rubber components
- Formula ideally suited to small-bore discharge pipes
- Product suitable for septic tanks
- Laboratory tested formula and usage quantities





COMMERCIAL RANGE

For many years, **SFA** has been making renovations faster and simpler. **SFA** gives the freedom to add extra water facilities to commercial property or office space without all the hard work.

Various restaurants, hotels bars, spa centers, business offices but also public buildings like schools, hospitals, hotels, bars, airports, museums are equipped with **SFA** units.

SANIBEST® Pro

SANIBEST® Pro

is ideal for situations where you do not control the use : such as a guest bathroom, rental unit of office building. It is designed to handle accidental flushing of sanitary items.



7 m
110 m



Optional



Vertical and Horizontal discharge: ↑ 7 m → 110 m

Recommended waste pipe diameter: 22 to 32 mm

Normal operating temperature: 35°C

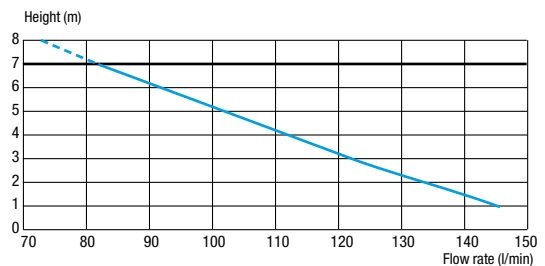
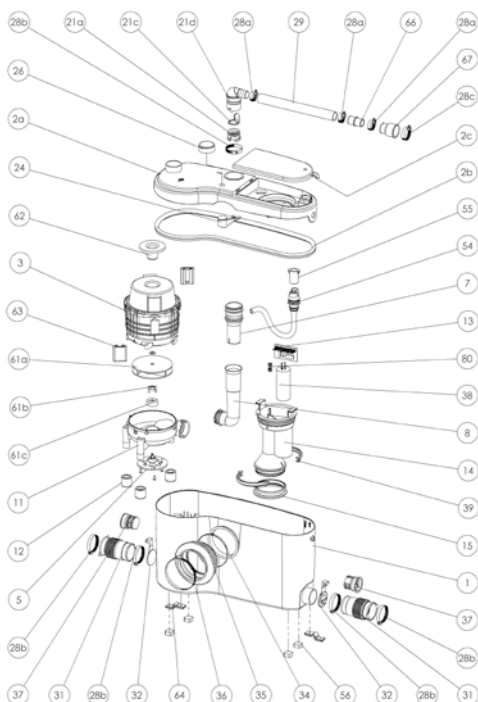
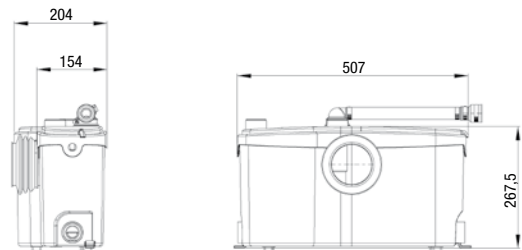
Index of protection: IP44

Electrical power supply: 220-240 V / 50 Hz

Motor power rating: 1 100 W

Non-return valve

Can be equipped with **SANIALARM®**



Direct access to the electrical components through the panel



SANISPEED®

SANISPEED® Silence is a powerful grey water pump which is intended for light commercial situations. It has a working temperature of 35°C and can operate at 75°C for short periods. It has proved extremely efficient in bar/restaurant environments where there were previously no alternatives to traditional gravity drainage.

7 m
70 m



Possible connections: wash basin, sink, shower, bidet, bathtub, dishwasher, washing machine

Electrical power supply: 220-240V / 50 Hz

Motor power rating: 400 W

Current consumption: 2 A

Electrical classification: I

Normal operating temperature: 35°C

Maximum admissible waste water temperature: 75°C (max 5 min)

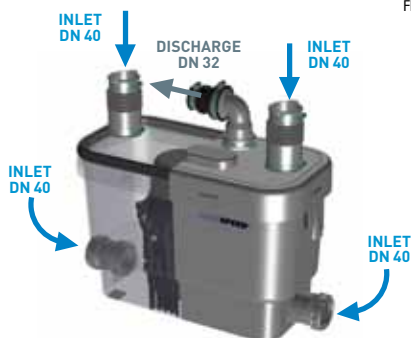
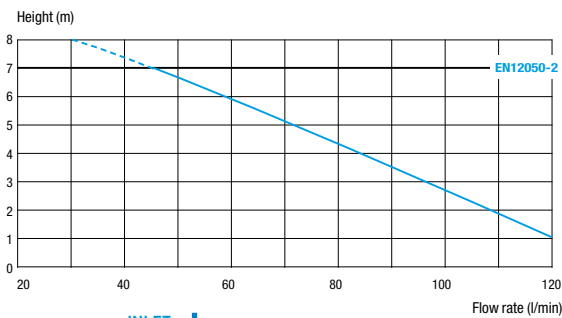
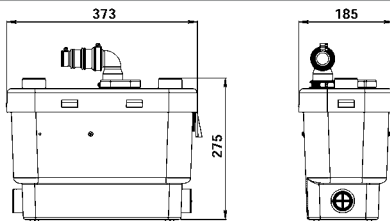
Index of protection: IP44

Weight: 6,4 kg

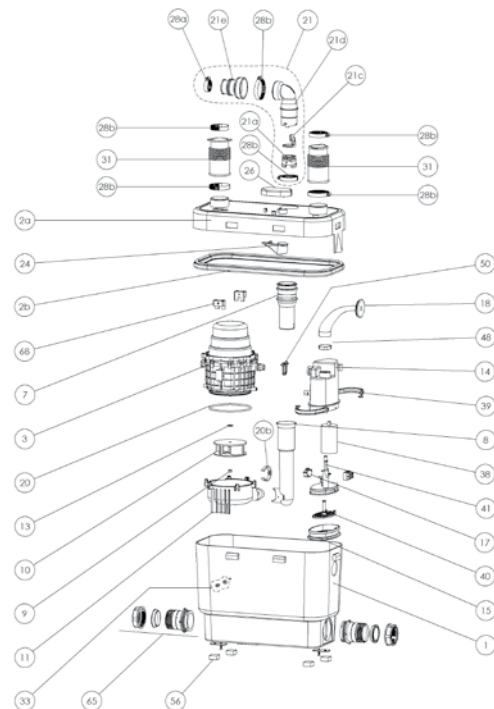
European Standard : EN 12050-2

Non-return valve

Can be equipped with **SANIALARM®**



Vertical and Horizontal discharge: ↑ 7 m → 70 m



COMMERCIAL RANGE

SANICOM® 1

Resisting to high temperatures, **SANICOM® 1** can be used as a lift station for any kind of waste waters (except toilet waters) in domestic and commercial places (bar, restaurant, laundry...)



10 m
100 m



Vertical and Horizontal discharge: ↑ 10 m → 100 m

Possible connections: waste water from kitchen, bathroom (except toilets), laundry room

Tank capacity: 10 L

Electrical power supply: 220-240V / 50 Hz

Motor power rating: 1 300 W

Current consumption: 6 A

Electrical classification: I

Normal operating temperature: 35°C
(maximum acceptable 90° for 5 min max)

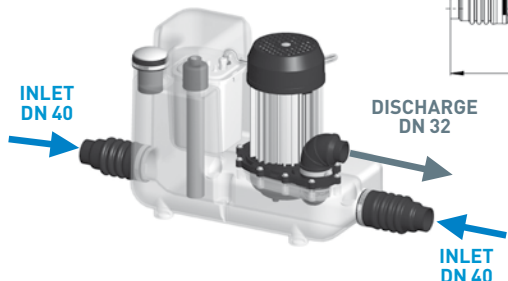
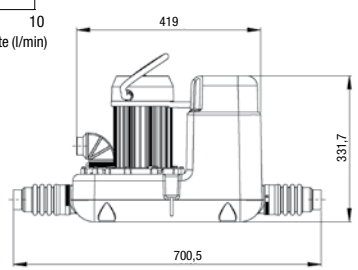
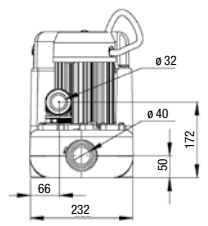
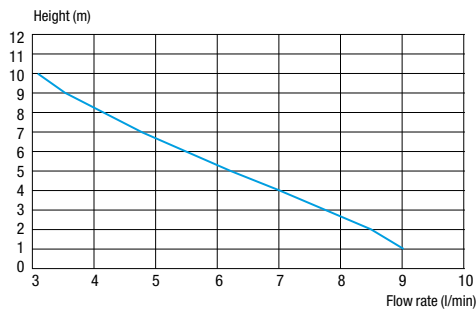
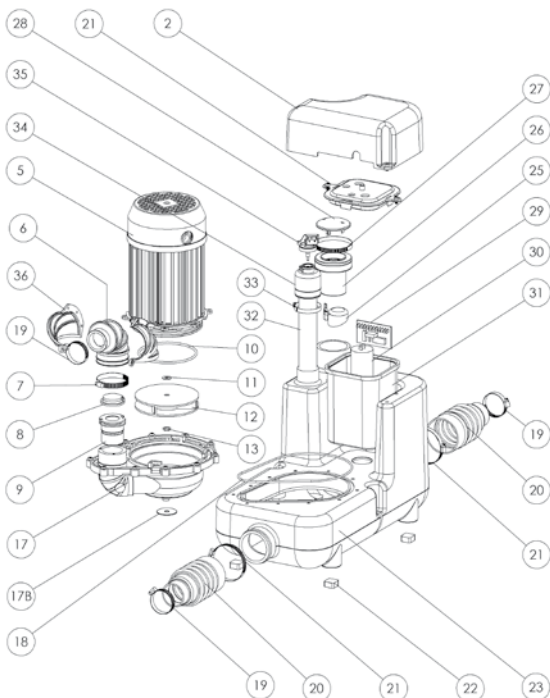
Weight: 10 kg

Index of protection: IP44

European Standard : EN 12050-2

Non-return valve

Possibility to fit an external alarm



SANICOM® 2

SANICOM® 2 is a dual-motor gray water pump that can be used to pump away waste water from bathrooms (except toilets), kitchens and utility rooms. **SANICOM® 2** has been specially designed for domestic or commercial use. Under normal conditions, the motors alternate, but when needed they both work to evacuate waste.



11 m
110 m



Possible connections: waste water from kitchen, bathroom (except toilets), laundry room

Tank capacity: 34,5 L

Electrical power supply: 220-240V / 50 Hz

Motor power rating: 2 x 1 500 W

Current consumption: 13 A

Electrical classification: I

Normal operating temperature: 35°C
(maximum acceptable 90° for 5 min max)

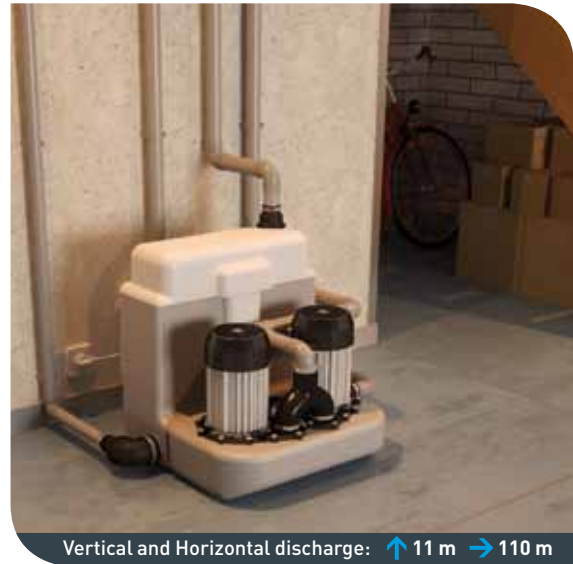
Index of protection: IP44

Weight: 26 kg

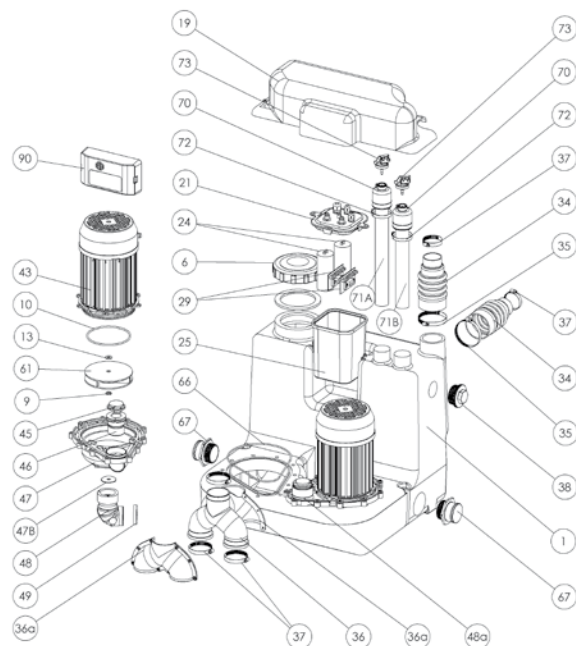
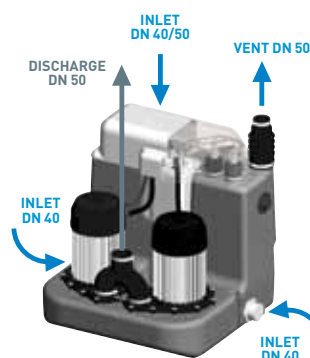
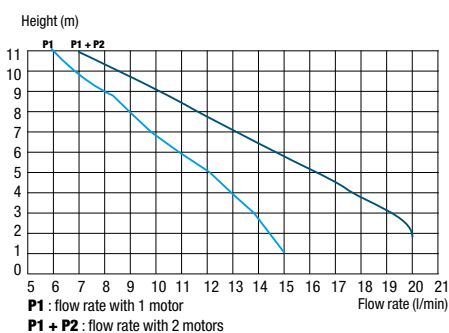
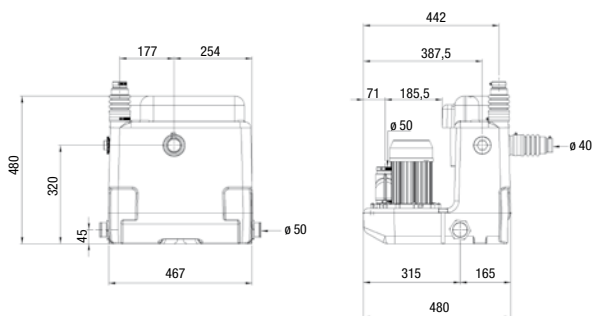
European Standard : EN 12050-2

2 Non-return valves

Equipped with an external alarm.



Vertical and Horizontal discharge: ↑ 11 m → 110 m



SANICUBIC® 1



11 m
110 m



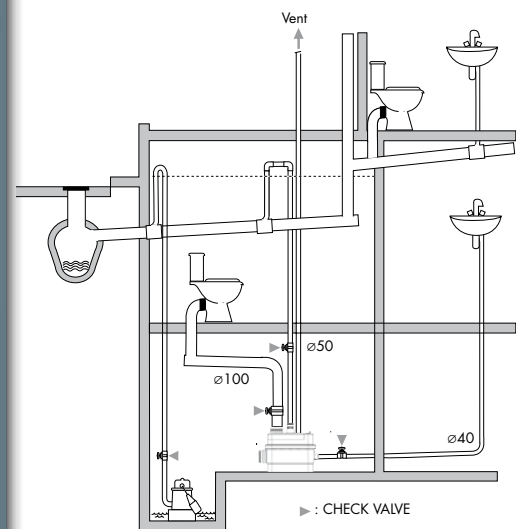
SANICUBIC® 1 is a powerful macerator pump that can discharge waste water from toilets, bathrooms, kitchens and utility rooms. The **SANICUBIC® 1** unit features a visual alarm panel that indicates system status.



Vertical and Horizontal discharge: ↑ 11 m → 110 m

Benefits of the SANICUBIC® 1

- Sanicubic 1 can handle up to 180 l per minute from several fixtures
- Powerful motor for absolute reliability and efficiency
- Visual LED alarm mounted on the unit (wired audible alarm included with the system)
- Easy installation above the floor
- Accepts accidental flushing of sanitary items



Possible connections:

several WC's, waste waters from kitchen, bathroom, laundry room

Recommended waste pipe diameter: 50 mm

Inlet diameter: • 1 inlet 40/50 mm • 3 inlets 40/50/100/110 mm

Vent diameter: DN 50 mm

Tank volume: 32 L

Electrical power supply: 220-240 V / 50 Hz

Motor power rating: 1 500 W

Maximum current input: 6 A

Electrical classification: I

Net weight (accessories included): 16 kg

Working temperature: 35°C

Maximum admissible waste water temperature: 70°C (max 5 min)

Index of protection: IP67

European Standard : EN 12050-1

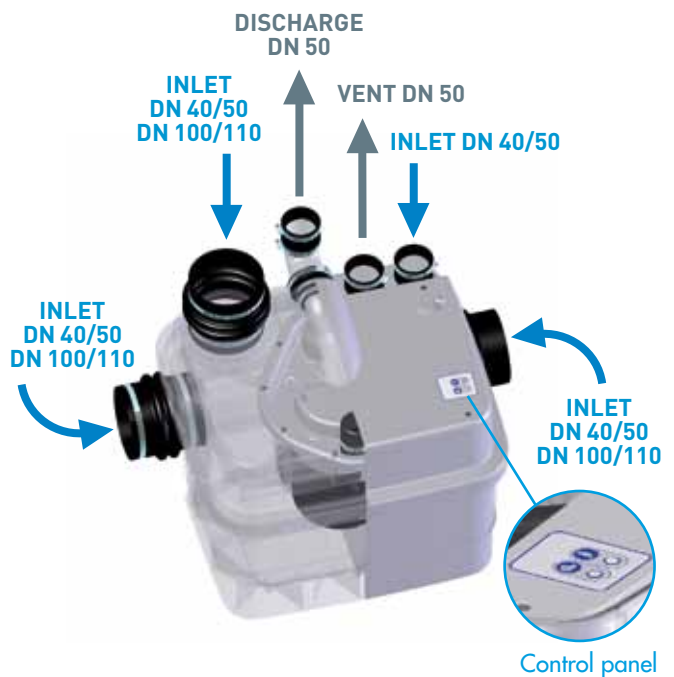
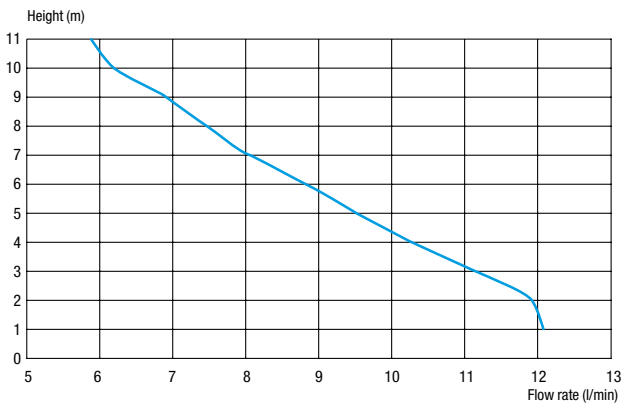
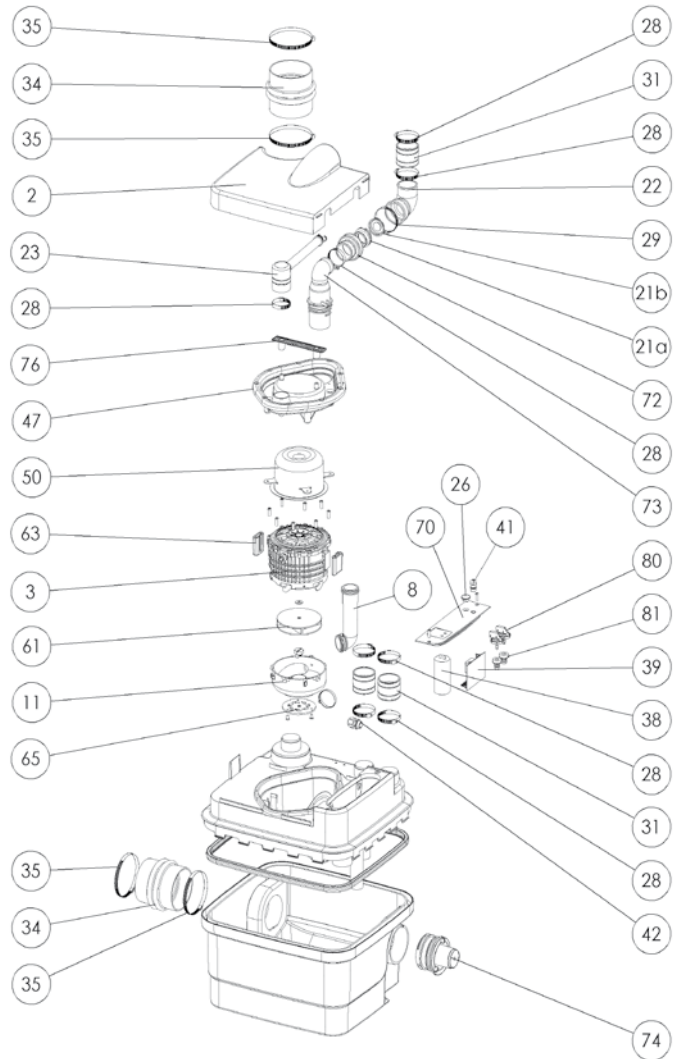
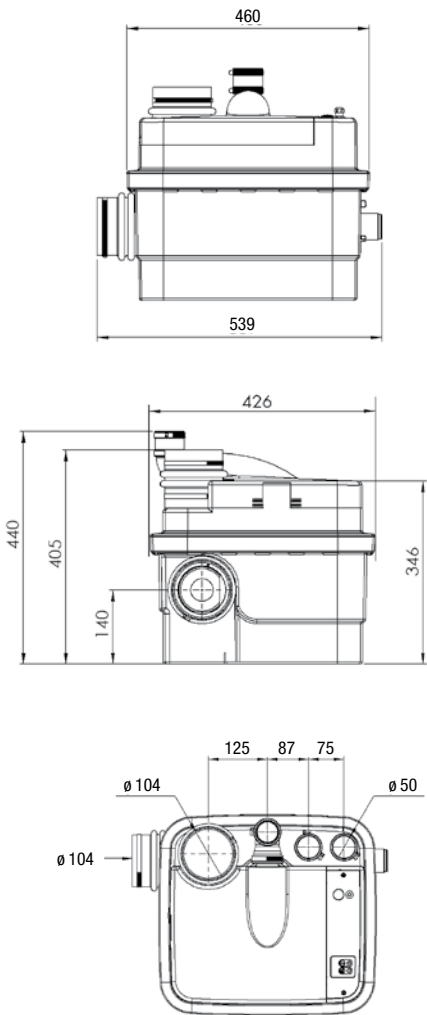
1 non-return valve

Control panel mounted on unit

Wired audible alarm included with the system



Ideal for
Wall-hung WCs



SANICUBIC® 2 Classic

SANICUBIC® 2 Pro



It is the most powerful pump of Saniflo Professional Range. It has been designed for discharging waste from multiple WCs and other waste water producing appliances. The unit is capable of discharging waste through 50mm pipework up to 11 m vertically or 10 m horizontally or a lesser combination of vertical x horizontal.



Vertical and Horizontal discharge: ↑ 11 m → 110 m

Each of the pumps is fitted with a high-performance maceration system. The 2 pumps operate alternately. In the event of inflow overload, both motors run at the same time (or if one of the pumps is faulty, the other one takes over).

The **SANICUBIC® 2 Classic** tank is fitted with 2 dip tubes; one tube controls motor operation, and the other one controls the alarm system.

- Long pickup tube (normal operation): as soon as the waste water level in the tank reaches the triggering point in the long tube, the pumping system starts up.
- Short pickup tube (inflow overload operation): if the waste water level in the tank reaches the upper point, a contact is closed and the auxiliary pumping system is triggered.

The contact also sets off an audible and visual alarm. The general alarm LED on the **SANICUBIC® 2 Classic** control panel switches to red. The system sends a high-frequency overload signal to the remote alarm unit.

Possible connections: several WC's, waste waters from kitchen, bathroom, laundry room

Recommended waste pipe diameter: 50 mm

Inlet diameter: • 1 inlet 40/50 mm • 4 inlets 40/50/100/110 mm

Vent diameter: DN 50 mm

Tank volume: 47 L

Electrical power supply: 220-240 V / 50 Hz

Motor power rating: 2 x 1 500 W

Maximum current input: 13 A

Electrical classification: I

Working temperature: 35°C

Maximum admissible waste water temperature: 70°C (max 5 min)

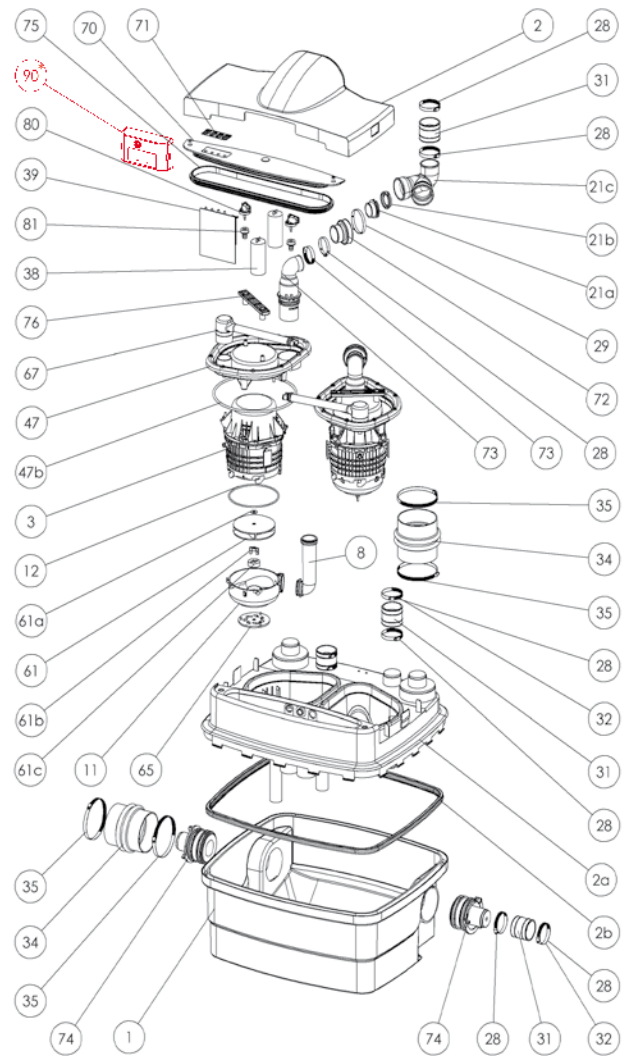
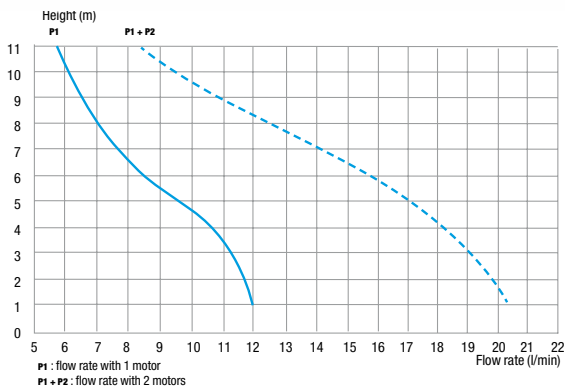
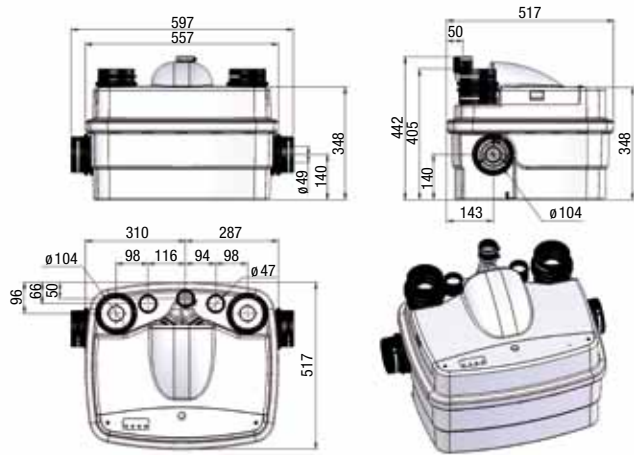
Index of protection: IP67

Net weight (accessories included): 30 kg

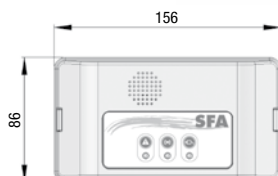
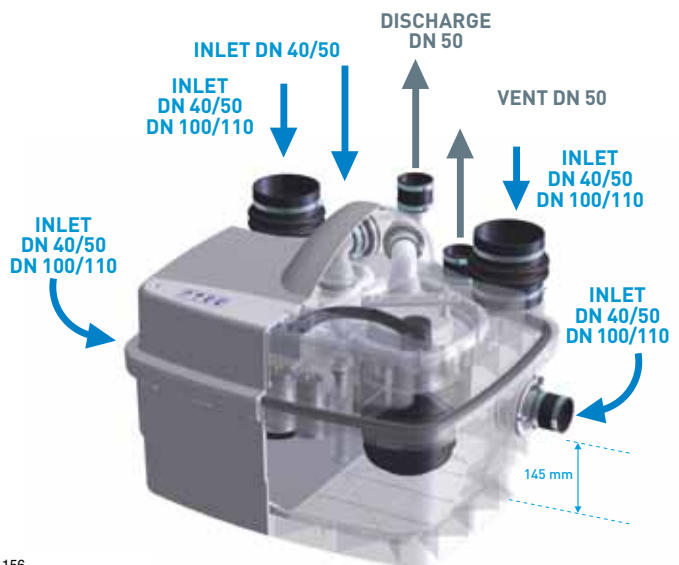
European Standard : EN 12050-1

2 non-return valves

Possibility to fit an external alarm (SFA option)



SANICUBIC® 2 Pro similar to **SANICUBIC® 2 Classic** features a double alarm system (one unit mounted and one cordless) with visual and audio indicators as standard. This allows easy monitoring of the system and detection of incidents (power cut, inflow overload, motor blockage caused by solids ..) The cordless alarm (remote-controlled through high frequency transmission) enables you to check on unit status remotely.

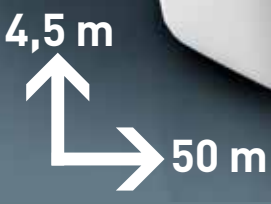


SANICONDENS® Pro

SANICONDENS® Pro pumps condensate away from condensing boilers and air conditioners. Small, this powerful pumping unit can be floor or wall mounted.

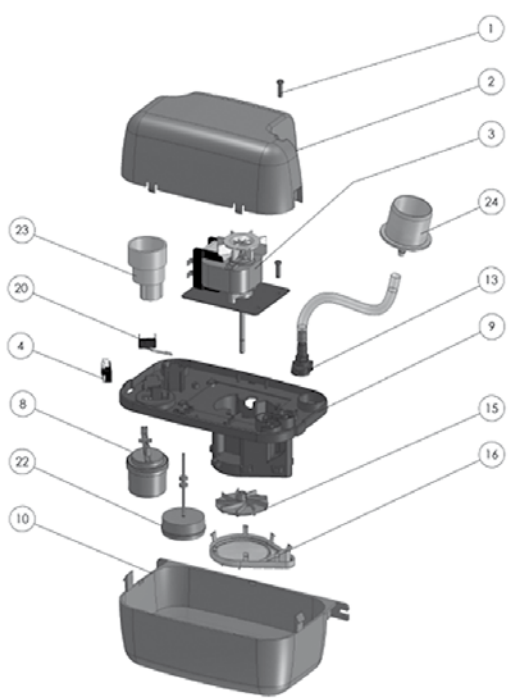
SANICONDENS® Pro comes with an auxiliary external overflow switch that will shut down the appliance or alert the consumer in the event of pump overflow.

NEW



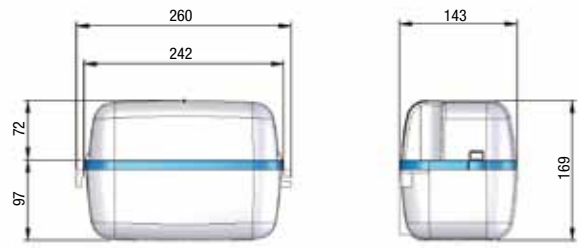
Vertical and Horizontal discharge: ↑ 4,5 m → 50 m

- Possible connections:** boiler, refrigerated display and air conditioner
 - Recommended waste pipe diameter:** 2 DN 28 mm
 - Discharge pipe:** 8/11 mm
 - Maximum flow rate:** 342 L/h
 - pH min:** 2,5
 - Tank volume:** 2 L
 - Electrical power supply:** 220-240 V / 50 Hz
 - Motor power rating:** 60 W
 - Maximum current input:** 0,52 A
 - Electrical classification:** I
 - Sound level:** < 45 dB(A)
 - Maximum admissible waste water temperature:** 80°C - S3 15 % (1 min 30 on / 8 min 30 off)
 - Net weight:** 2 kg
 - Index of protection:** IP20
- Supplied with : wall mount brackets, inlet adapter, discharge adapter (DN 50 mm), 5 m of flexible discharge pipe, 2 m power cord, prewired to an alarm



Benefits

- 2 inputs with one shut-off
- Prewired to an alarm
- 2 L tank
- The volume of the tank saves the pump from starting too frequently
- Compact
- Easy mounting with dual direction (vertical and horizontal) mountings



SANICONDENS® Clim mini

SANICONDENS® Clim mini is an air conditioner condensate lift pump. Its small size enables it to fit easily into a wall-mounted air conditioner. **SANICONDENS® Clim mini** operates discreetly without noise disturbance.

NEW



SANICONDENS® Clim pack

SANICONDENS® Clim pack is a ready-to-fit kit containing a condensate lift pump (**SANICONDENS® Clim mini**) and a chute. **SANICONDENS® Clim pack** is specially designed for easy and discrete fitting.



Operating principle

SANICONDENS® Clim mini consists of two main components: the detection unit and the pump unit. The condensates first enter the detection unit. When the level in this unit is sufficiently high the pump switches in, sucks up the condensate and pumps it out.

Benefits

- Compact
- Silent
- Safety system (anti-overflow alarm switch and calibrated thermal protection device)

Possible connections: air conditioners of refrigeration capacity of 10 kW or less

Maximum flow rate: 15 L/h

Suction lift: 2 m (between the detection unit and the pump)

Maximum vertical discharge: 6 m

Electrical power supply: 220-240 V / 50 Hz

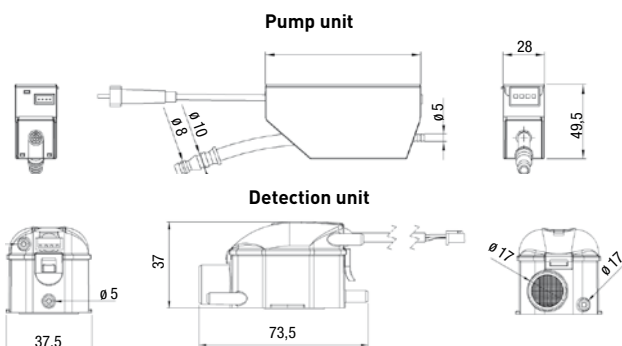
Motor power rating: 22 W

Index of protection: IP 20

Safety devices:

- Calibrated thermal protection device
- Anti-overflow alarm switch
- Pump grounding

Supplied with a 1.5 m flexible hose, mounting bracket, vent tube and supply cable

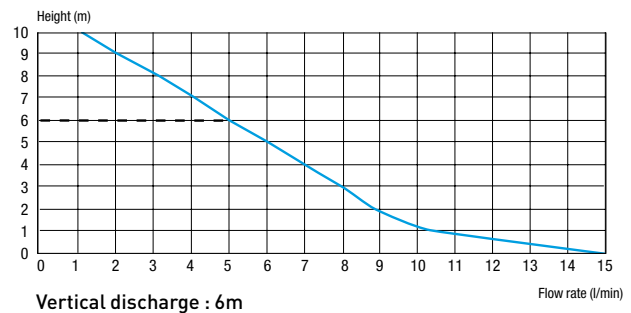


Operating principle

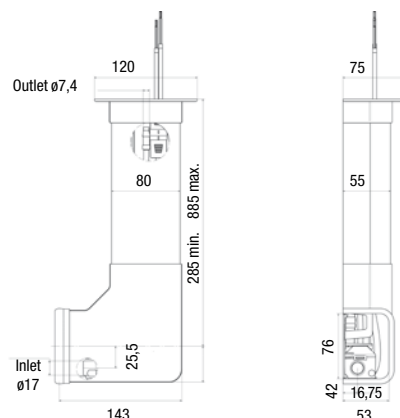
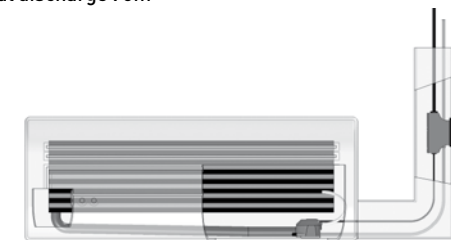
SANICONDENS® Clim Pack has exactly the same operating principle as the **SANICONDENS® Clim mini**.

Benefits

- Ease of fitting (all mounting and connection accessories are supplied)
- Reversible base plate (right/left)
- Very quiet
- Stylish design



Vertical discharge : 6m



SANICONDENS® Clim deco

SANICONDENS® Clim deco is an air conditioner condensate lift pump. With its clean lines and small size, the pump fits easily into any type of installation.

NEW



6 m
↑



Vertical discharge: ↑ 6 m

Possible connections: air conditioner of refrigeration capacity of 10 kw or less

Maximum flow rate: 12 L/h

Maximum vertical discharge: 6 m

Electrical power supply : 220-240 V~ / 50 Hz

Motor power rating: 16W

Index of protection: IP 24

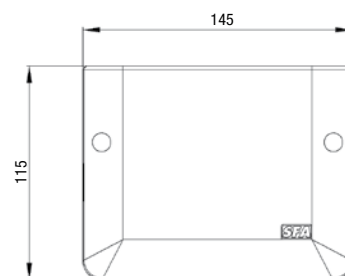
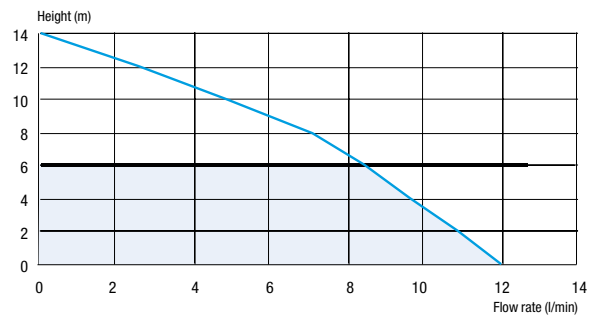
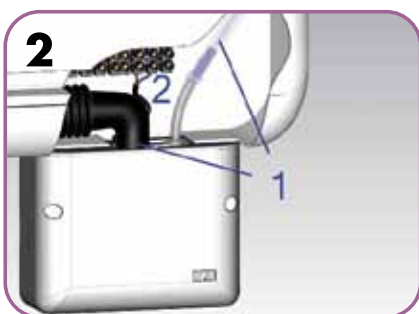
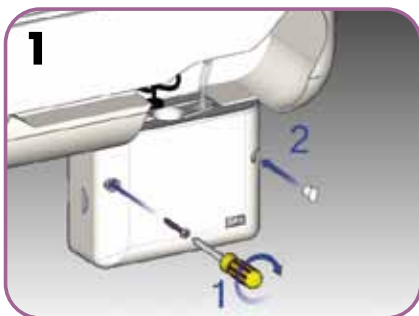
Safety devices: Calibrated thermal protection device

Supplied with wall mount brackets

Benefits

- New clean design
- High performance
- Very easy to install and maintain

Installation





SANIACCESS

SANIACCESS[®] RANGE

The new easy access macerator range by **SFA** is backed by over 50 years of experience on the field.

The concept of "easy access" allows you to intervene immediately and easily with the device without having to remove it.

The first panel provides ready access to the basket area around the macerating blades for easy removal of any large objects that may have been accidentally flushed.

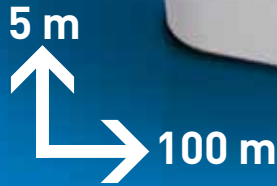
Through the second panel, a service contractor can access the electrical components as well as the level sensor mechanism of the pump.

SANIACCESS 1

SANIACCESS® 1

will pump out the soil water from a toilet up to height of 5 m, or 100 m horizontally. Thanks to its clean design **SANIACCESS® 1** fits easily into all types of spaces.

NEW



Basket (macerating blades)

Pressostube® (electrical section)

Vertical and Horizontal discharge: ↑ 5 m → 100 m

Recommended waste pipe diameter: 22/28/32 mm

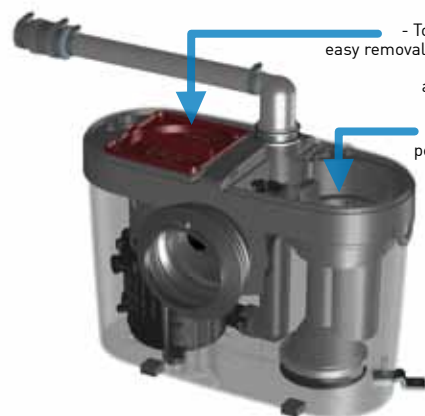
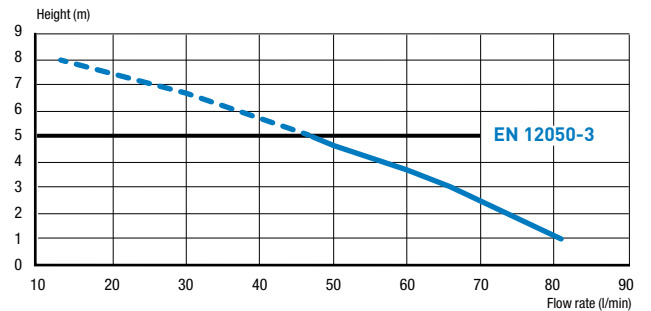
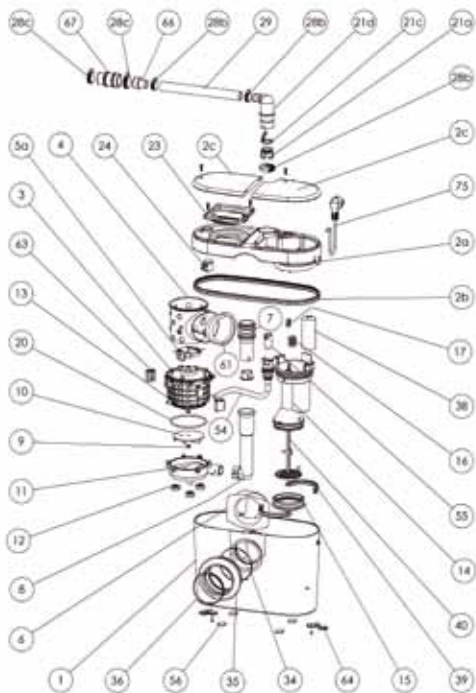
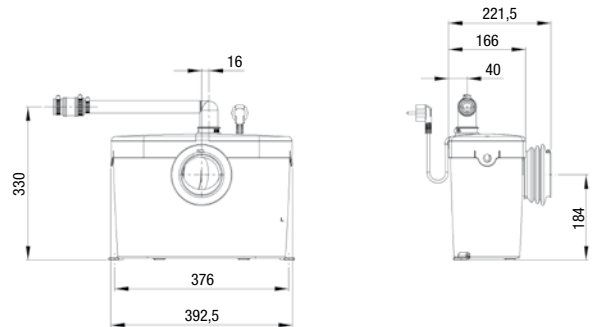
Normal operating temperature: 35°C

Index of protection: IP44

Electrical power supply : 220-240 V / 50 Hz

Motor power rating: 400 W

Non-return valve



Double access:

- To the basket area for easy removal of any large objects that may have been accidentally flushed.
- The electrical components for periodic maintenance

SANIACCESS 2

With its small tank and its two top inlets, **SANIACCESS® 2** can be used to pump out a toilet and a wash basin together.

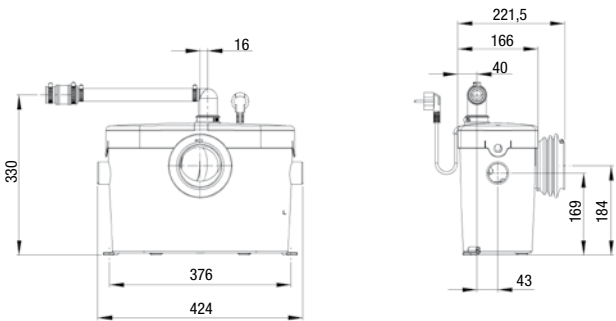
NEW



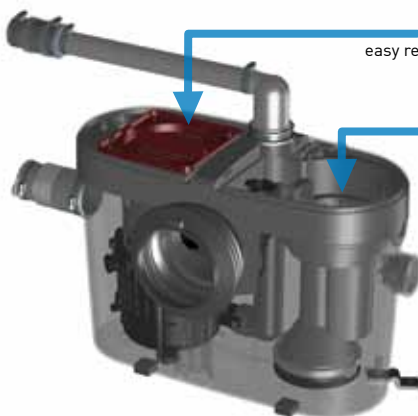
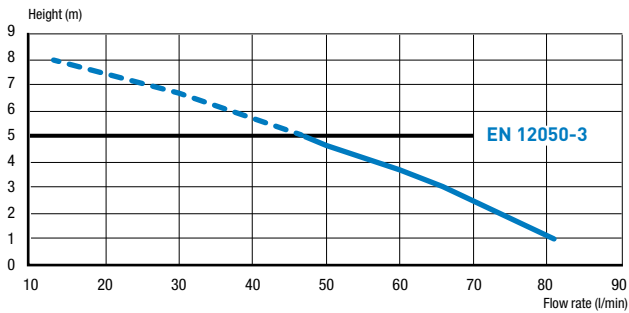
5 m
100 m



- Recommended waste pipe diameter: 22/28/32 mm
- Normal operating temperature: 35°C
- Index of protection: IP44
- Electrical power supply : 220-240 V / 50 Hz
- Motor power rating: 400 W
- Non-return valve

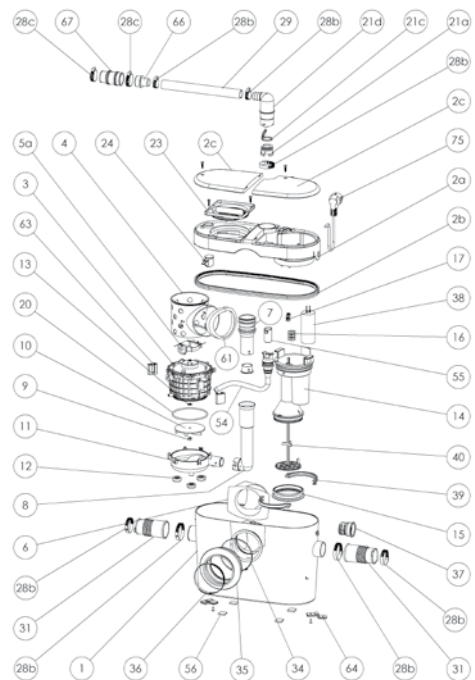


Vertical and Horizontal discharge: ↑ 5 m → 100 m



Double access:

- To the basket area for easy removal of any large objects that may have been accidentally flushed.
- The electrical components for periodic maintenance



SANIAACCESS 3

Quiet and smart, **SANIAACCESS® 3** makes it possible to install a complete bathroom.

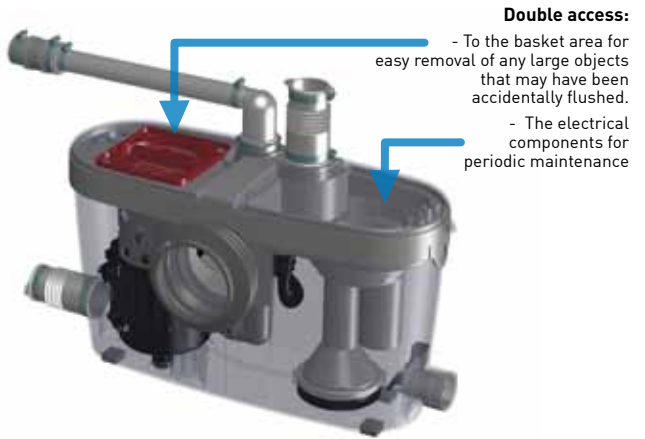
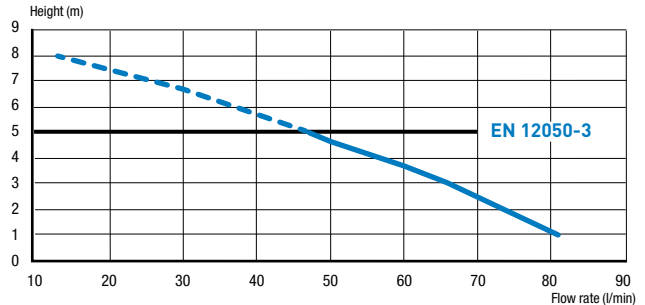
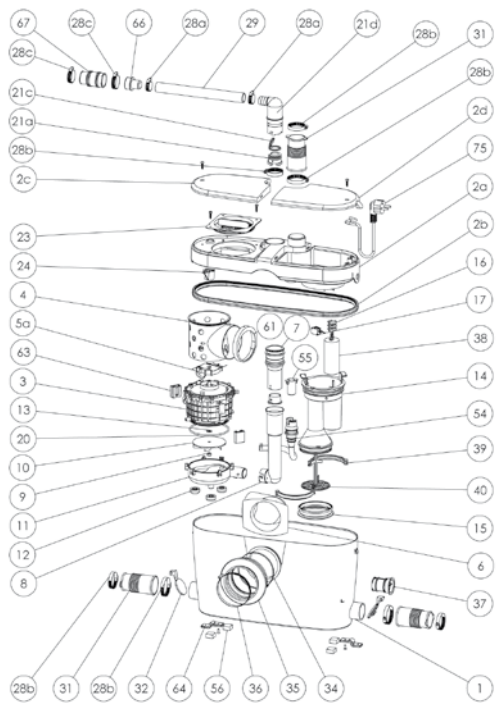
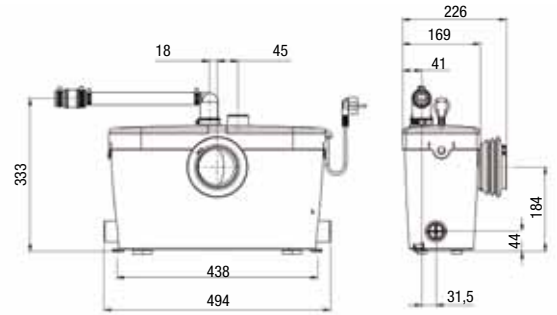


5 m
100 m



Vertical and Horizontal discharge: ↑ 5 m → 100 m

- Recommended waste pipe diameter: 22/28/32 mm
- Normal operating temperature: 35°C
- Index of protection: IP44
- Electrical power supply : 220-240 V / 50 Hz
- Motor power rating: 400 W
- Non-return valve



- Double access:**
- To the basket area for easy removal of any large objects that may have been accidentally flushed.
 - The electrical components for periodic maintenance

NEW

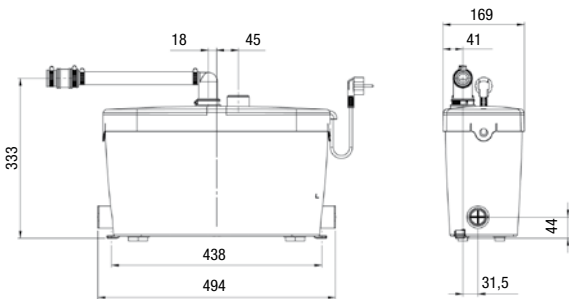
With its water inlet temperature of up to 75°C, **SANIACCESS® Pump** is particularly suited to emptying showers, baths, washbasins, bidets, washing machines and dishwashers.



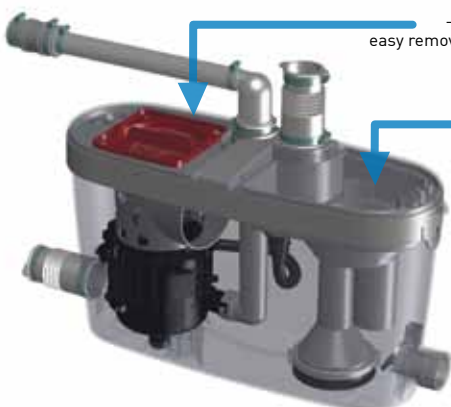
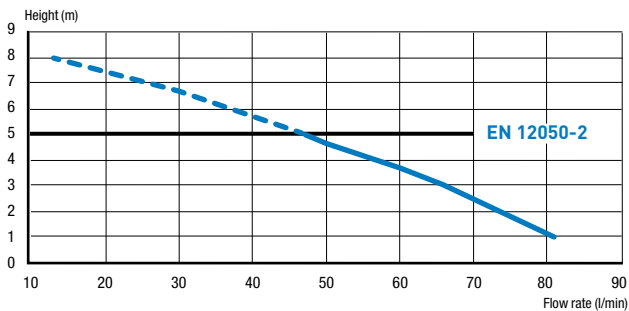
5 m
50 m



- Recommended waste pipe diameter: 22/28/32 mm
- Normal operating temperature: 35°C
- Maximum incoming water: 75°C
- Index of protection: IP44
- Electrical power supply : 220-240 V / 50 Hz
- Motor power rating: 400 W
- Non-return valve

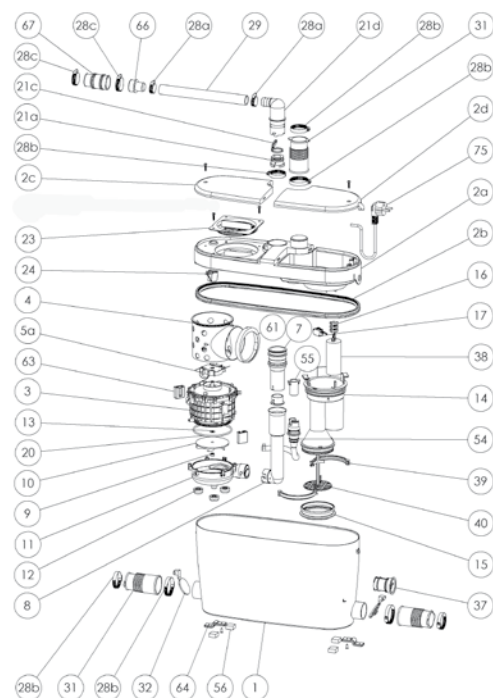


Vertical and Horizontal discharge: ↑ 5 m → 50 m



Double access:

- To the basket area for easy removal of any large objects that may have been accidentally flushed.
- The electrical components for periodic maintenance



WWW.SFA.BIZ



USER FRIENDLY **NEW WEBSITE**
THAT IS REGULARLY UPDATED
TO PROVIDE UP TO THE MINUTE
PRODUCT INFORMATION
AND TECHNICAL SUPPORT.

A French group with an International presence through 22 subsidiaries worldwide...

-  Groupe SFA International, France
-  SANIFLO AB, Sweden
-  SANIFLO, United Kingdom
-  SFA Poland, Poland
-  SFA Rus, Russia
-  SFA JAPAN K.K., Japan
-  SFA SANIBROY, Germany
-  SFA BENELUX BV, The Netherlands
-  SFA SANIRISH, Ireland
-  SFA SANIFLO INC., USA
-  SFA SANIFLO INC., Canada
-  SFA SANIBROY, Austria
-  SFA SANITRIT, Italy
-  SFA SANITRIT, Spain
-  SFA LDA, Portugal
-  SFA SANIFLO SRL, Romania
-  SANIFLO, Australia
-  SFA SANIBROY, Czech Republic
-  SFA, China
-  SANIFLO, New Zealand
-  SFA SANIBROY, Switzerland
-  SFA, Turkey



... and through more than 60 partners
all around the world

For any information, contact
international department:

GROUP SFA

8, rue d'Aboukir - 75002 Paris
Tel. +33 1 44 82 39 20
Fax. +33 1 44 82 39 25

2-YEAR GUARANTEE

SFA pumps and macerators meet the European standards currently in force (EN 12050-3 and EN 12050-2) and are produced in a factory with ISO 9001 certification in its 2008 version issued by AFAQ in France.

