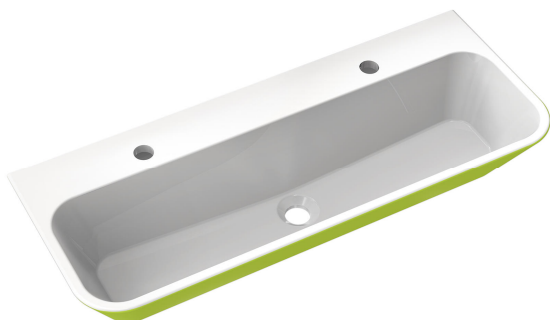


Product data sheet
Double washbasin 950.12.2056

HEWI

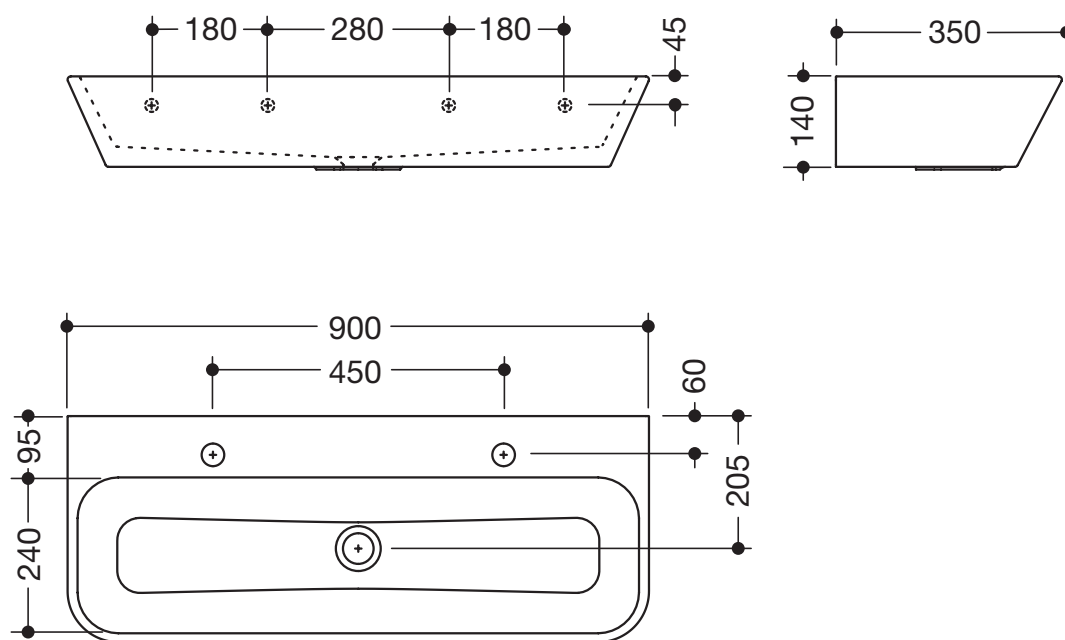


Double washbasin 950.12.2056

- especially suitable for child daycare centres
- made of mineral composite with non-porous surface
- two-coloured: alpine white and HEWI colour 74 (apple green)
- rectangular basin with large radii
- without overflow
- prepared for single hole mixer taps
- 900 mm wide and 350 mm deep
- for hanger bolt fixing
- weight capacity to EN 14688
- high water temperature: resistant to thermal shock up to 65 °C, resistant up to 80 °C for an exposure period of 5 minutes
- CE marking according to Construction Products Regulation No. 305/2011



Dimensions in mm



Technical information subject to alteration, 16th August 2019

HEWI Heinrich Wilke GmbH
Postfach 1260
D-34442 Bad Arolsen

Telefon: +49 5691 82-366
Telefax: +49 5691 82-99366
international@hewi.com
www.hewi.com

HEWI (UK) Limited
Holm Oak Barn, Beluncle Halt
Stoke Road
Hoo Kent ME3 9NT

Phone +44 1634 258 200
Fax +44 1634 250 099
info@hewi.co.uk
www.hewi.com