

# NORMBAU

PASSION FOR CARE

## Cavere Suspensible lift-up support 7447863 vario, suspendable, with E-Button, L = 600mm, with base plate



Lift up support rail with base plate vario, E-Button: WC-NO, Connection to mounting plate length 600mm,

made of aluminium, scratch-resistant powder coating with antibacterial protection, available in Cavere colours, with trigonometric contour for ergonomic support and grip, space-saving, centrally aligned mounting, left or right hand application, with durable maintenance-free, friction

bearings, with adjustable brake, easy installation or dismantling due to

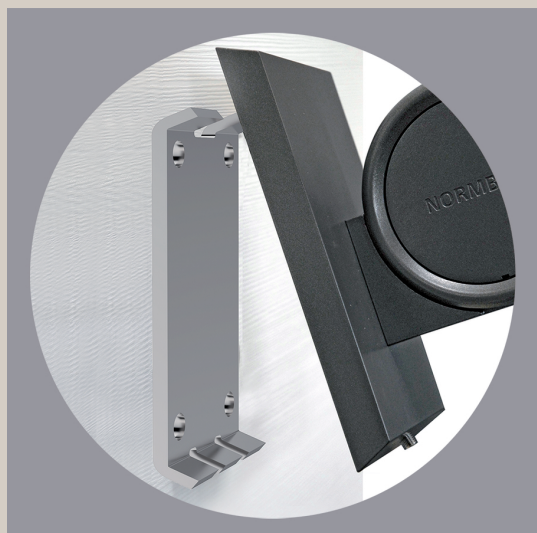
connecting to base plate, base plate, made of stainless steel for balanced wall mounting, concealed screw fixing, can be fitted with paper roll holder

7449 110, maximum loading permitted: 100 kgs,

Maximum loading permitted: 100 kg.

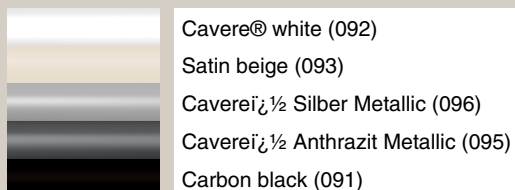
General description: Button 32 mm dia, with symbol: colour blue for toilet flush, colour red for option call, colour black for a free definable option (neutral). Four lead 0,25mm<sup>2</sup> helix cable suitable for up to 24V D.C., A max. of two E-Buttons can be mounted on a lift-up support rail vario, suspendable. E-Buttons with function »closer« are mostly used for toilet flush, they can also be equipped with another free definable option. E-Buttons with function »opener« are mostly used for call systems.

The fixing set should be ordered separately to suit the type of wall.



Product code	7447863
--------------	---------

Product group	7000
---------------	------



NORMBAU GmbH  
Schwarzwaldstraße 15  
77871 Renchen/Germany  
Telefon +49(0)7843 / 704 - 0  
Telefax +49(0)7843 / 704 - 43  
www.normbau.de · normbau@allegion.com

ALLEGION™