

PRODUCT IMAGE AND DRAWING



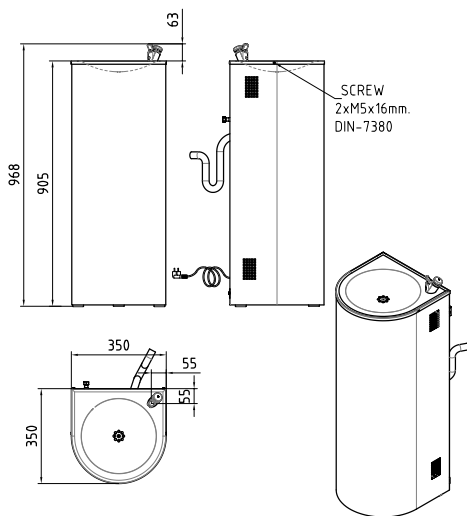
FO-001

DRINKING FOUNTAIN WITH COOLING UNIT

Drinking Fountain with Cooling Unit made of 1mm thick stainless steel AISI-304 (1.4301).  
Coolant: R 134A.

Basin polished finish  
Cover grinding finish

With glass filler.



REFERENCE	FEATURES	DIMENSIONS
FO-001		360x350x900 mm



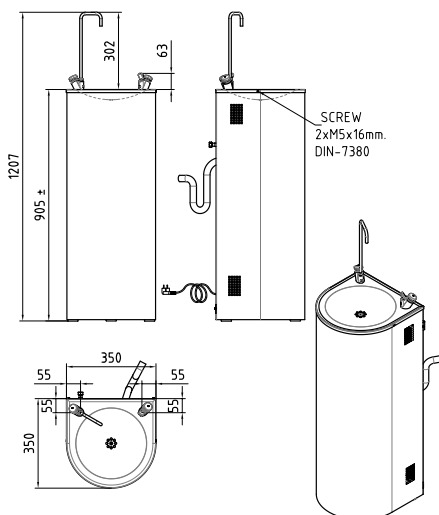
FO-002

DRINKING FOUNTAIN WITH COOLING UNIT

Drinking Fountain with Cooling Unit made of 1mm thick stainless steel AISI-304 (1.4301).  
Coolant: R 134A.

Basin polished finish  
Cover grinding finish

With bottle and glass filling spout.



REFERENCE	FEATURES	DIMENSIONS
FO-002		360x350x900 mm

PRODUCT IMAGE AND DRAWING



## FP-001

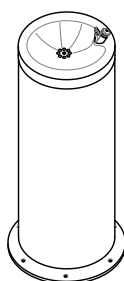
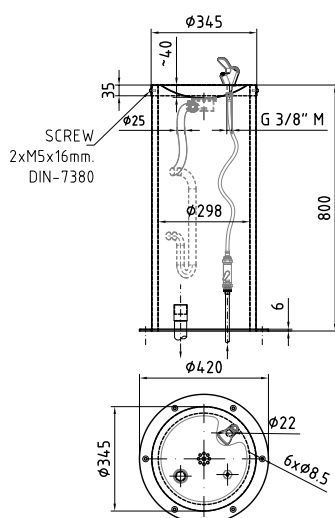
### DRINKING FOUNTAIN

Drinking fountain for floor installation made of 1mm thick stainless steel. Supplied with a push button water bubbler.

Basin polished finish  
Cover grinding finish

\* Customized height for children available.

Made of Stainless Steel AISI 304 (1.4301)



REFERENCE	FEATURES	DIMENSIONS
FP-001		345x345x800 mm



## FP-002

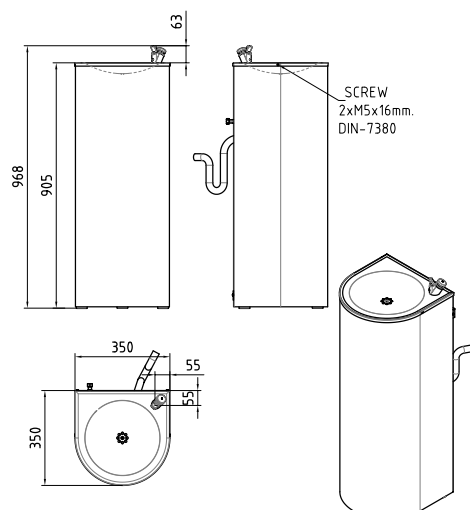
### DRINKING FOUNTAIN

Public drinking fountain made of 1mm thick stainless steel AISI-304 (1.4301).

Basin polished finish  
Cover grinding finish

\* Customized height for children available.

With glass filler.



REFERENCE	FEATURES	DIMENSIONS
FP-002		360x350x900 mm

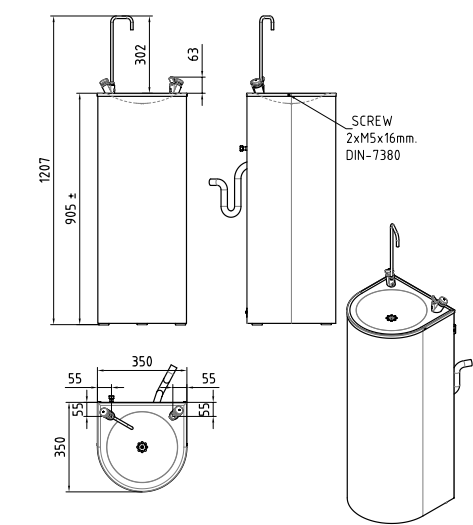
PRODUCT IMAGE AND DRAWING



**FP-003**  
**DRINKING FOUNTAIN**

Public drinking fountain made of 1mm thick stainless steel AISI-304 (1.4301).

Basin polished finish  
Cover grinding finish  
\* Customized height for children available.  
With bottle and glass filling spout.



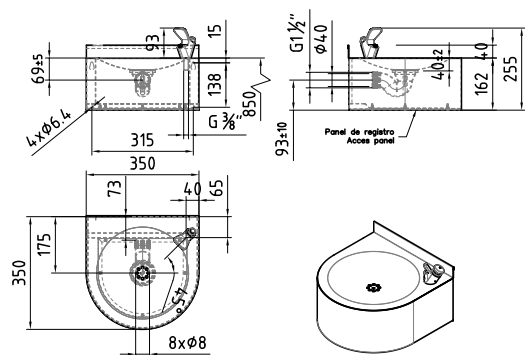
REFERENCE	FEATURES	DIMENSIONS
FP-003		360x350x900 mm



**FP-004**  
**DRINKING FOUNTAIN**

Wall hung public drinking fountain made of 1mm thick stainless steel AISI-304 18/10 (1.4301).

- With access panel.  
- With glass filler.



REFERENCE	FEATURES	DIMENSIONS
FP-004-P	Polished finish	350x350x220 mm
FP-004-S	Brushed finish	350x350x220 mm

PRODUCT IMAGE AND DRAWING

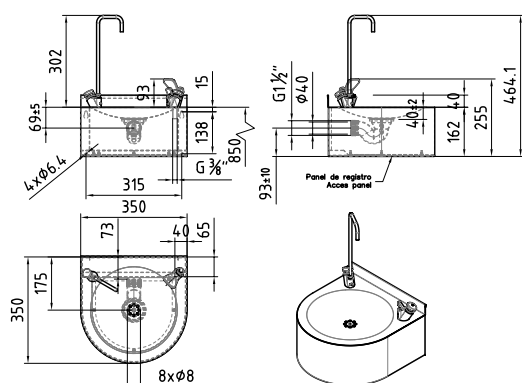


## FP-005

### DRINKING FOUNTAIN WITH COOLING UNIT

Wall hung public drinking fountain made of 1mm thick stainless steel AISI-304 18/10 (1.4301).

- With access panel.
- With glass and bottle filler.



REFERENCE	FEATURES	DIMENSIONS
FP-005-P	Polished finish	350x350x220 mm
FP-005-S	Brushed finish	350x350x220 mm



## FO-TH-001/002

NEW

### DRINKING FOUNTAIN WITH NEW COOLING UNIT

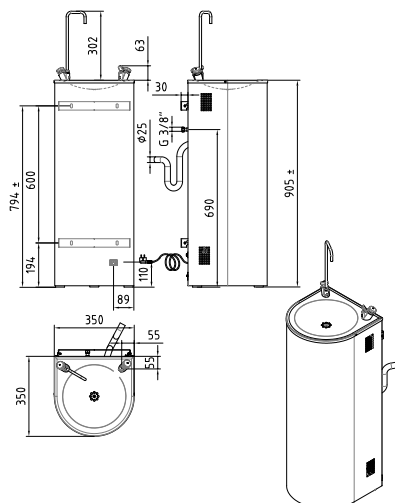
#### BUBBLER INCLUDED

Cooled drinking fountain made of 1mm thick stainless steel AISI-304 (1.4301). With ice tamb.

Basin polished finish  
Cover grinding finish.

FO-TH-001: Supplied only with a bubbler.

FO-TH-002: Supplied with a bubbler and bottle filler tap.



REFERENCE	FEATURES	DIMENSIONS
FO-TH-001	Brushed finish	350x350x900 mm
FO-TH-002	Brushed finish	350x350x900 mm