



intra



A COMPANY OF THE **teka**-GROUP

The public sanitary room



Inspired by design

Intra has a long tradition of product development and design. For many years we have worked with leading industry designers. From our classic models, Scanstyle and Eurora, to our latest models, such as Millinox and Frame, we have focused continuously on quality and design. We have won awards and prizes because our innovative products are associated with exclusive design and exceptional functionality.



1987

Design Company of the Year in Norway

1992

Norwegian candidate for the Scandinavian Design Management Prize

1999

Supply of sanitary products for The Black Diamond building in Copenhagen

2001

Hall of Fame Companies Searching for Excellence in Design

1987

Award for Design Excellence Scanstyle

1997

Award for Design Excellence Eurora

2000

Award for Design Excellence Millinox



Intra is a design company with expertise in working with steel, and develops products for the kitchen and public sanitary areas. We are part of the large, international industrial group, Teka Industrial S.A., one of the world's leading manufacturers of kitchen sinks and appliances. This gives us a solid platform to do what we do best: create and develop innovative design products. We reach a wider market, and can offer products for both the premium market and other price segments.



2004
Supply of sanitary products to the art museum in Århus.

2007
Intra is a wholly owned part of the industrial group, Teka Industrial S.A.

2009
Supply of sanitary products to Norway's Farris Bad Spa Hotel

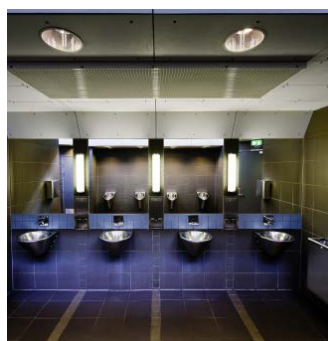
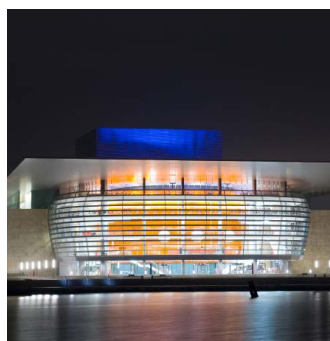
2014
Icon wash basin
Inspired by pure Scandinavian nature

2002
International design
Development of Culinaire for American Standard

2005
Supply of sanitary products to the Copenhagen Opera House

2009
Supply of sanitary products to Oslo Central Railway Station

2009
Frame.
The new generation of kitchen sinks



Intra's ambition is to raise the standard of pu

The sanitary room is important, Not only because most of us spend large parts of our day in public sanitary areas, but equally, because in many ways they are a building's signature. It is one of the rooms in which one can create character, and an experience of something extra.

It is also a room where quite particular requirements are made in terms of functionality, user-friendliness, design and aesthetics. The sanitary room needs to meet complex needs, while at the same time being capable of withstanding very intensive use over time without deterioration in quality. So, stainless steel is the obvious choice of material for this purpose. A unique material with special properties, and advantages, which has also become an important part of Intra's signature.

Intra's ambition is to raise the standard of public sanitary areas. It is our ambition - and always our point of departure, when we develop products and solutions for one of the most important buildings in the room.

This is an ambition we share with our customers, and one of the reasons why we are so often the supplier of choice for ambitious projects with no compromise in respect of functional and aesthetic quality.



Public sanitary areas.



Reference project



City Hall in Oslo.

Intra has long had a strong position in Scandinavia as a total supplier of solutions for public sanitary areas. As part of Teka Industrial, Intra has become a global player.

SPORTS ARENAS

Benicassim Football Stadium
Dijon Football Stadium
Fredrikstad Stadium
Hills Golf Club, Mölndal
Leikvollhallen, Asker
Real Betis Football Stadium
Real Madrid Football Stadium
Sports centre in Grenada

TRANSPORT TERMINALS

Airport offices in Mexico DF
London Heathrow Airport
Terminal T4, Madrid Airport
Oslo Bus Terminal
Oslo Airport, Gardermoen
Oslo Central Station
Palma de Mallorca Airport
Portals Nous Marina, Mallorca
Torp airport, Sandefjord

HOTEL

Austria Trend Hotel Congress
Choice Hotel, Tønsberg
Choice Hotel 33, Oslo
Comfort Hotel, Trondheim
Club Aldiana, Austria
Fiesta and Sol hotels, Mexico
Four Seasons hotels, Egypt
Hotel Adlon Kempinski Berlin
Hotel Farris, Sacramento
Hotel Palm Beach Benidorm
Hotel Melia, Mexico
Hotel Melia Madrid Princesa,
Hotel of Schwarzenberg Palace, Austria
Hotel San, Caliu Mallorca
Iberostar, Piñero, Melia, Barcel Ó
Khalifa committee Villas, Abu Dhabi
Marriott hotel, Phuket
Orient Manhattan Villa, Shanghai
Park Hotel, Voss

Pyramid hotel in Vösendorf

Queen and Swiss hotels in Sri Lanka
Royal Garden Hotel, Trondheim
Sheraton Hotel, Bangkok
Songdal Hotel
Sunroute Plaza Tokyo Disney Resort
Vizcaya Fazenda Villa, Shanghai
Wellness Hotel Stanglwirt, Austria

HOSPITALS

Bellvitge Hospital
Hospital Durdens and Ayverdie, Sri Lanka
Hospital Mazurelle, France
Narco Hospital in Tartu, Estland
Mount Carmel Psychiatric Hospital, Malta
Rheinau Psychiatric Hospital
Operating Theatre in Las Palmas Hospital
Paraplegic National Hospital of Toledo
Bamako Hospital, Mali
Cartagena Hospital



The Royal Danish Opera House, Copenhagen

Elche Hospital

Laso Hospital, Greece

Mollet del Vallés Hospital, Spain

Puerto de Sagunto Hospital, Spain

Thessaloniki Hospital, Greece

POLICE STATIONS AND PRISONS

Bjørgvin Prison, Bergen

Kaunas Detention Centre, Lithuania

Alhaur de la Torre Prison, Spain

Assen Police Station, The Netherlands

Brussels Police Station

EDE Police Station, The Netherlands

Hengelo Police Station, The Netherlands

Tallinn Police Station, Estonia

RESTAURANTS, SPA AND WELLNESS CENTRES

Aker Brygge Shopping Centre, Oslo

Aqua Dome Spa, Austria

Bergen Cinema

Buskerud Storsenter

Contra Bar

City Lade

Credo Trondheim

Egon Restaurant, Bergen

Flydaksjuvet, Trollstigen

Garage Rock klubb, Bergen

Gullskogen Shopping Centre, Oslo

Høvleriet, Haugesund

IKEA, Slependen

Kungsmässan, Kungsbacka

Riskal Leisure Centre, Spain

Rex Club, Paris

Rick's restaurant, Trondheim

Rick's Nightclub, Bergen

Rodeo Grill Restaurant, Spain

Therme Laa Spa, Austria

Tristan restaurant, Spain

360° Kuwait Mall

SCHOOLS/UNIVERSITY/COLLEGES

Bioteknologi, Ås

BI Studentenes Hus

NTNU, Trondheim

Smestad School, Oslo

OTHER PROJECTS

Auditorium of Zaragoza, Spain

Conference Centre of Santiago de

Compostela, Spain

Eiffel Tower

European Investment Bank (E. I. B),

Luxembourg

Gardeleiren, Oslo

NATO Building in Brussels

Intra - part of Teka Sanitary Systems, which is also

In 2007, Intra became part of Teka Industrial S.A. Teka, an international industrial group with business activities in 125 countries. Products range from sanitary goods, kitchenware, appliances, steel containers and electronics.

Together, this gives us a unique platform for industrial manufacturing and innovative product development.

The four cornerstones of Teka's business activities are innovation, quality, expertise and knowledge. Since 1924, Teka Group's ambition has been to provide superior products with innovative design and technology. This is a vision shared by both Teka and Intra, and which is reflected in the way we work.

Teka Sanitary Systems

Teka Group's aim is to become a total supplier of equipment for both kitchens and baths. Our core business is taps shower systems and sanitary equipment made from high quality 18/10 stainless steel. Teka's factories

in Norway, Spain, Hungary and China have specialized in production of sanitary products, and supply goods to cooperation partners in over 50 Countries. With over 100 years of experience, we have gained the trust of architects, engineers and installers worldwide.

Benefits of stainless steel



Easy to keep clean



No pores for bacterial growth



Lifelong durability



Odour-free



Unbreakable
Water- and fire-
retardant



Recyclable



so part of the industrial group, Teka Industrial S.A.





Scandinavian design

Functional design. Contemporary design, to use every day. Scandinavian design is known for combining pure elegance with strict requirements in terms of quality and function. Clean and simple contours, high-quality materials and the small, subtle details you will learn to appreciate after many years of use.

From its very inception, Intra has been an exponent of Scandinavian design. Early on in the process we established a cooperation with designers such as Odd Thorsen and Bruno Oldani, and together we have developed a profile, concepts, and meticulously designed, durable products.

Hence, sanitary equipment is far from uniform in design. The obvious differences you see; others you discover over time. Intra's products have been designed and manufactured in Scandinavia for generations, and have been adapted to the Scandinavian market.

A quality label

Intra has been awarded the prestigious Award for Design Excellence from the Norwegian Design Council on several occasions. This award demonstrates recognition of successful use of design to create innovative products and solutions. A stamp of quality for the company, and for the products you choose.

Intra has also received several international design awards.

Urinals and Toilets



Oslo Central Station

Intra is total supplier of sanitary solutions for Oslo Central Station. The sanitary areas are among the most visited in Norway, and have to be able to cope with heavy use. To avoid the constant need to replace porcelain sanitary goods, Oslo Central Station has chosen sanitary solutions in stainless steel. The solution is vandal-resistant and durable, with in-built washstands and urinals with concealed fixing.

Intras products allow functionality and durability to go hand in hand with good design. The sanitary spaces in Oslo Central Station are attractive and inviting, with a rugged aesthetic that fits perfectly with the surroundings.



Intra's stainless steel wall-mounted toilet can also be supplied in a disabled version.

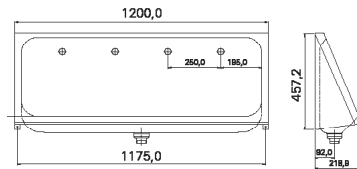
Urinals and WCs



Tough and durable sanitary room in stainless steel

Intra's urinals have a vandal-resistant front cover, which conceals the outlet, and are supplied with or without flush. Flush free urinals are hygienic and cost-saving, and significantly reduce water consumption. Elegant urinal divider wall reinforce the tough, minimalistic aesthetic.

Intra supplies stylish toilets for wall and floor mounting, and suitable for most standard in-built cisterns. We also have a model with cisterns, and several of our models can also be supplied in a disabled version. Our products are vandal-resistant, and stainless steel is hygienic, easy to clean and extremely durable.



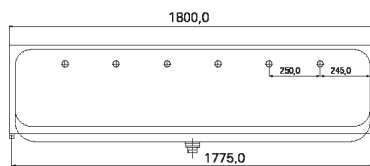
URP120 STD

Urinal in stainless steel 18/10

NRF 6320123 GTIN 7055570002148

Description Accessories

Wall mounting. Two alternative 1½" grated waste. 1 ½" connections: one concealed and one open. Mounting Screws and fixing rails. Spreaders on the sides. Centered waste.



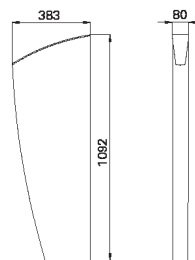
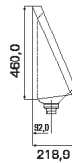
URP180 STD

Urinal in stainless steel 18/10

NRF 6320126 GTIN 7055570002179

Description Accessories

Wall mounting. Two alternative 1½" grated waste. 1 ½" connections: one concealed and one open. Mounting Screws and fixing rails. Spreaders on the sides. Central outlet.



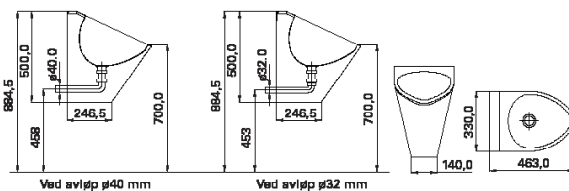
Millinox divider wall MXUW

Divider wall for urinal unit in stainless steel 18/10

NRF 6186349 GTIN 7055570012826

Description

Satin finish. With hidden wall bracket.



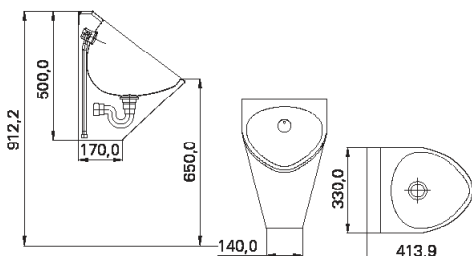
Endura flush-free urinal Edu-1WF

Urinal in stainless steel 18/10

NRF 6186352 GTIN 7055570014684

Description

Wall mounting. With vandal-resistant front cover for concealed fixing and outlet. Supplied complete with fixing bracket, IQ 4D flush free waste unit. 32 and 40 mm outlet dimension.



Endura Edu-1

Urinal in 18/10 stainless steel

NRF 6175249 GTIN 7055570012864

Description

Wall mounting. With vandal-resistant front cover for concealed fixing, water trap and water inlet. Supplied with fixing, ½" connection, 1 ¼" grated waste and water trap.

Flush free urinals



Why does Intra's Flush-free urinal work so well?

Intra's flush-free urinal comprises a number of important advantages. They are cost saving, have a significantly lower water consumption, and low installation costs. It is also easy to keep clean and great looking!



Brilliant!

Works as a counter valve - prevents odour.

How to maintain optimal flush-free function?

- . Daily cleaning and flushing with water prevents deposits forming.
- . Old plumbing must be cleaned prior to installation.
- . Ideally, fit water-bearing products, e.g. washstands, upstream of flush free products so that the water flushes out residue and deposits.
- . Avoid angling the branch pipe so that sewage can enter the water outlet and form deposits. Incorrect angling may result in foul odours.
- . Make sure that the piping system is properly ventilated.
- . The outlet must be a closed system angled in such a way that collection of urine can be avoided.

Benefits of Intra's flush free urinals:

- Cost-saving
- Significantly reduces water consumption
- Low installation costs
- Vandal-resistant
- Easy to keep clean
- Great design!

Installing the Intra flush-free urinal will save approximately 43 500* litres of water annually compared to a traditional flush urinal!

*A traditional flushing toilet uses approximately 15–2 litres of water per flush. With a mean 70 flushes per day, this results in a water consumption of approximately 45 000 litres annually.

We recommend daily flushing of the Intra flush-free urinal with approximately 4 litres/day, i.e. an annual water consumption of 1 500 litres.

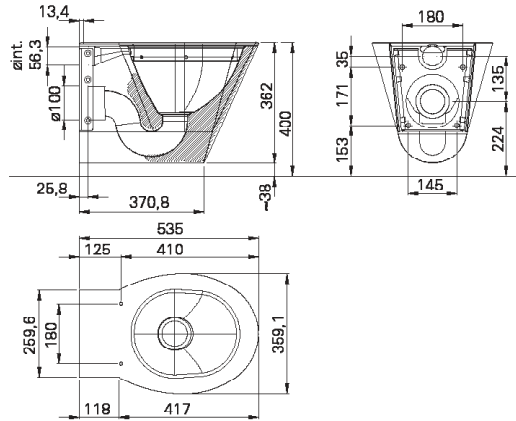
Annual water consumption using traditional urinal:
Approx. 45 000 L

Annual water consumption using flush-free urinal:
Approx. 1 500 L

Annual water saving using Intra flush-free urinal:
Approx. 43 500 L

For more details, see www.intra-teka.com

WC



WCV4

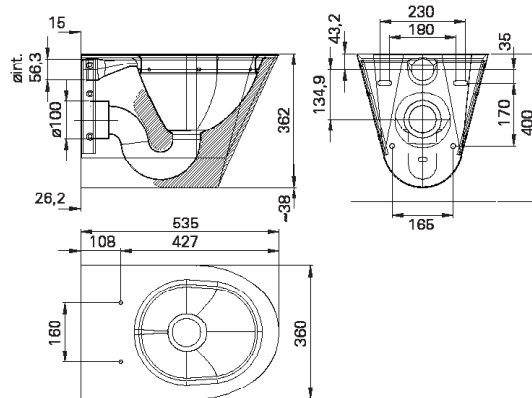
Toilet in stainless steel

NRF 8166304 GTIN 7055570015445

Description

Wall mounting. Standard with P-trap and wall bracket in stainless steel and sound-insulating foam, without seat.

Seat in black or white available on request, TBTOSEAT 6-8.



WCV4E

Toilet in stainless steel

NRF 6175249 GTIN 7055570012864

Description

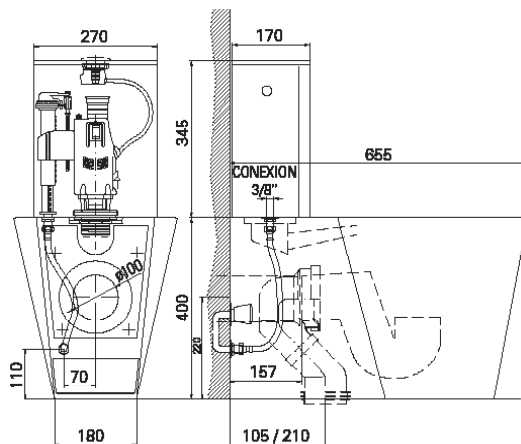
Wall mounting. Standard with P-trap and wall bracket in stainless steel and sound-insulating foam, without seat.

Seat in black or white available on request, TBTOSEAT 4-5.

WCV4E-HC

Stainless steel toilet Disabled model. Depth 700 mm. Standard P-water trap.

GTIN 7055570015469



WCK4

Floor-standing toilet in stainless steel

NRF 8166306 GTIN 7055570015438

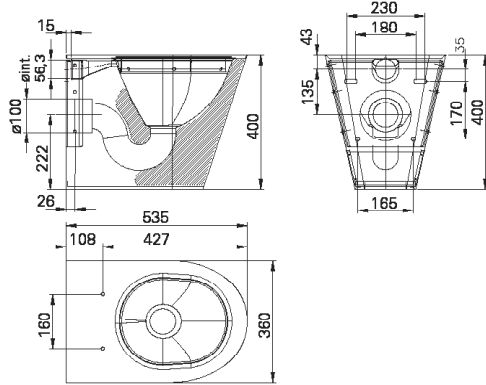
Description

Standard unit supplied with 6 litre cisterns and black seat TBTOSEAT 6. Inspection hatch, built-in wall bracket in stainless steel, and sound-insulating foam. The seat can also be ordered in white or mahogany TBTOSEAT 7-8.

WCK4-HC

Stainless steel toilet Disabled model. Floor-standing toilet, height 500 mm and depth 700 mm. Standard with P-water trap or optional S-water trap. 6 litre cisterns and black seat. The seat can also be ordered in white or mahogany.

WC/compact unit



WCG4E

Toilet in stainless steel

NRF 8166308 GTIN 7055570015414

Description

Floor-standing toilet. Standard with P-trap, wall bracket in stainless steel and sound-insulating foam, without seat. Seat in black or white available on request, TBTOSEAT 4-5.

WCG4E-HC



Floor-standing toilet in stainless steel

NRF 8166309 GTIN 7055570015421

Description

Floor standing toilet, disabled model. Standard with P-water trap or optional S-water trap, wall-mounting welded into model, sound-insulating foam.

Seat in black or white available on request, TBTOSEAT 4-5.

Height 500 mm, depth 700 mm.

Compact units with the following supply options

Contact us for solutions that fit your project.

Wall or corner model.

Raised or floor-standing toilet.

The toilet can be fitted on the right, left or centre of the unit.

Vandal-resistant mixer tap.

Flush valves for washstand and toilet Wall Panel.

Can also be supplied for service from service room.



COMPAC

Compact unit with built-in toilet, washstand and toilet roll holder

Description

Compact unit with built-in toilet, washstand and toilet roll holder.

Sound-insulating foam. Fully welded with rounded corners. Comes with integrated waste and wet zone round basin.

The toilet has $\varnothing 76$ mm P-water trap with $\varnothing 100$ mm connection.

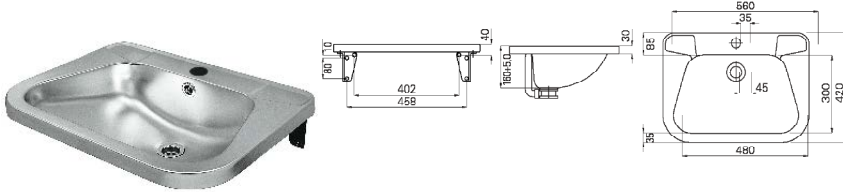
Washbasin



Washbasins for all needs

Intra provides a wide range of basins for wall-, inset-, and under-mounting. We also offer vandal-resistant solutions.

Stainless steel gives a modern, sleek impression, is maintenance-free and extremely durable.



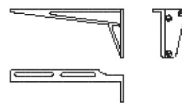
RS72STD

Washbasin in stainless steel

NRF 6175241 GTIN 7055570001011

Description Variant

Wall mounting. 18/10 stainless steel without wall brackets. Without waste. With overflow. Without tap hole.

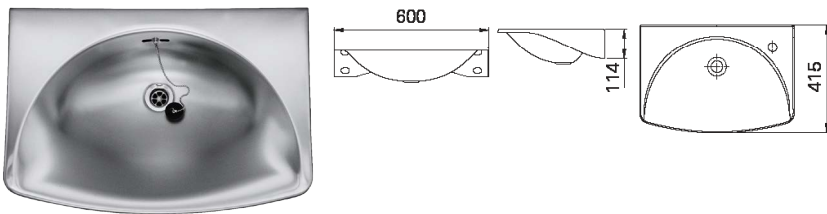


Wall brackets 91008

In moulded, untreated aluminium for washstand RS72 STD.

Pair.

NRF 6175473 GTIN 7042283401016



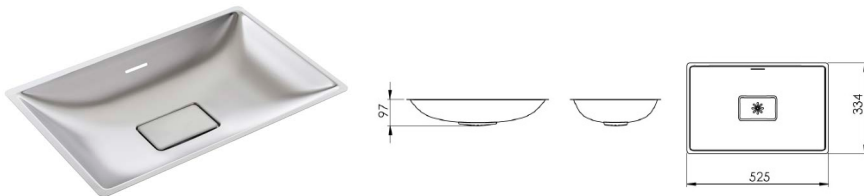
Endura ED1ROL

Washbasin in 18/10 stainless steel

NRF 6175249 GTIN 7055570012864

Description Variant

Wall mounting. Stainless steel in satin finish. Supplied with integrated wall brackets. 1 1/4" open waste with plug/chain and overflow. Tap hole on right hand side.



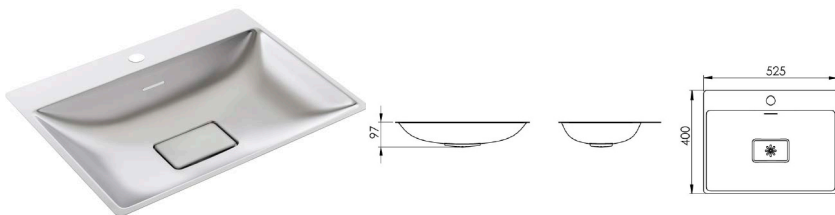
IC1

Washbasin in stainless steel

NRF 6175017 GTIN 7055570016053

Description Variant

Flush- and undermounting. Supplied with overflow hole.



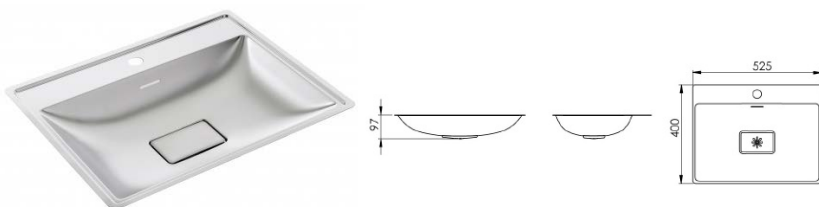
IC2

Washbasin in stainless steel

NRF 6175018 GTIN 7055570016077

Description Variant

Flush mounting. Supplied with overflow hole and tap hole.



IC3

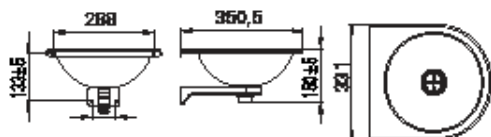
Washbasin in stainless steel

NRF 6175019 GTIN 7055570016091

Description Variant

Flush- and undermounting, and inset. Supplied with overflow hole, tap hole and wet zone.

Washbasins



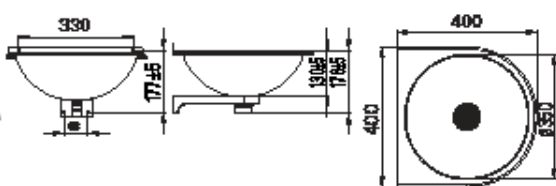
Endura ED2-0

Washstand in stainless steel

GTIN 7055570015117

Description Variant

Wall mounting. Stainless steel with grated waste and support bracket. Can be supplied with taphole on request.



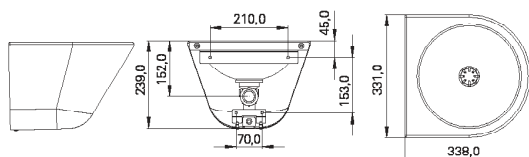
Endura ED3-0

Washstand in stainless steel

NRF 7513014 GTIN 7055570015124

Description Variant

Wall mounting. Stainless steel with grated waste and support bracket. Can be supplied with taphole on request.



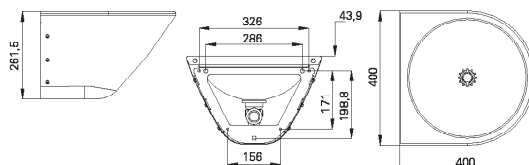
Endura ED2R

Washstand in 18/10 stainless steel

NRF 6175391 GTIN 7055570014363

Description Variant

For wall mount in 18/10 brushed stainless steel. For bolt-fix to finish. Supplied with integrated service room. Fixing bolts outlet valve, water trap and mounting bracket. M 10x30 mm included. Complete with vandal-resistant cover.



Endura ED3R

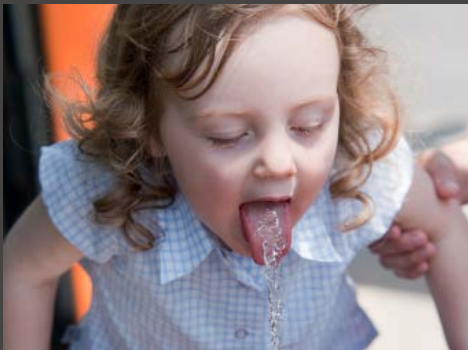
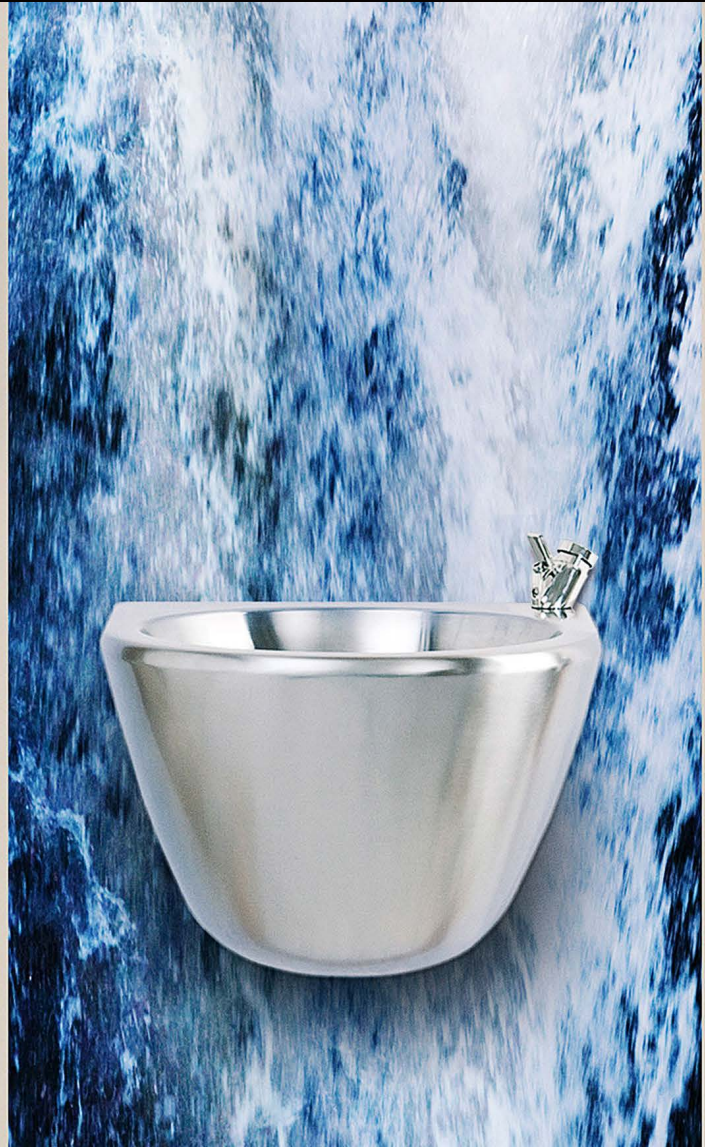
Washstand in 18/10 stainless steel

NRF 6175397 GTIN 7055570014394

Description Variant

For wall mount in 18/10 brushed stainless steel. For bolt-fix to finish. Supplied with integrated service room. Fixing bolts outlet valve, water trap and mounting bracket. M 10x30 mm included. Complete with vandal-resistant cover.

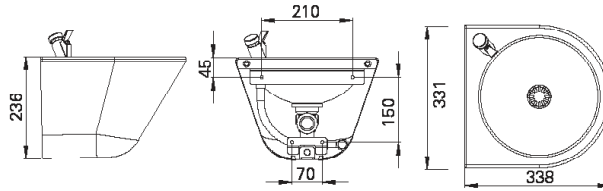
Drinking fountains



Fresh water whenever you like!

Popular drinking fountains with eye-catching design.

The fountains are made from stainless steel, a durable material that is easy to keep clean. It makes them very suitable for locations with high-frequency use, e.g. schools, offices, airports, sporting venues/construction sites, train stations and hospitals.



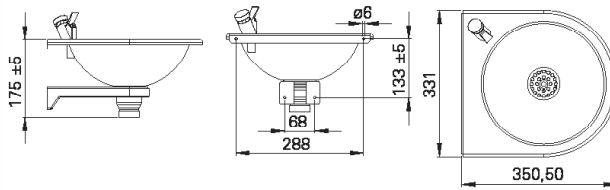
Endura ED2DF

Drinking fountain in stainless steel 18/10

NRF 6175395 GTIN 7055570014226

Description

Wall mounting. 18/10 brushed finish stainless steel. Supplied with fittings, integrated waste, water trap and fixing brackets. Complete with vandal-resistant cover. No cooling.



Endura ED2-0DF

Drinking fountain in stainless steel 18/10

NRF 7513015 GTIN 7055570015209

Description

Wall mounting. Brushed finish 18/10 stainless steel. Supplied with fittings, integrated grated waste, water trap and fixing brackets. No cooling.

Wash troughs



Durable and practical

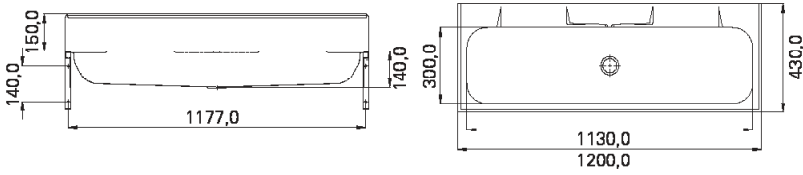
Wash troughs made to withstand daily use in school and kindergartens, in sports arenas and industrial buildings.

For increased safety, several of our models are supplied with "bumpers" which cover sharp corners. If you don't need bumpers, we also have simpler variants.

All of our models have centered waste holes and are made from fully pressed stainless steel with no unhygienic joints.



Intra wash troughs with bumbers are particularly well-suited to kindergartens and schools.



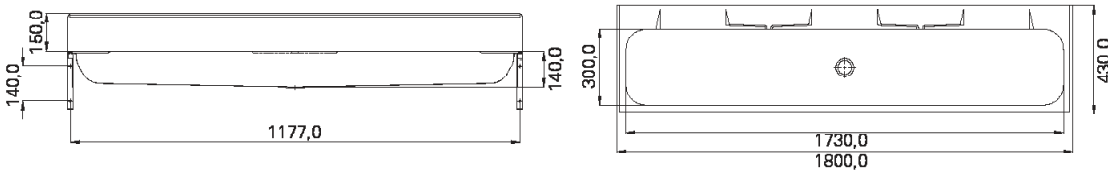
P120V

Fully pressed wash trough

NRF 6321903 GTIN 7055570001967

Description

In stainless steel 18/10 with wall brackets, wall panel and 1 ½" grated waste.



P180V

Fully pressed wash trough

NRF 6321906 GTIN 7055570002056

Description

In stainless steel 18/10 with wall brackets, wall panel and 1 ½" grated waste.

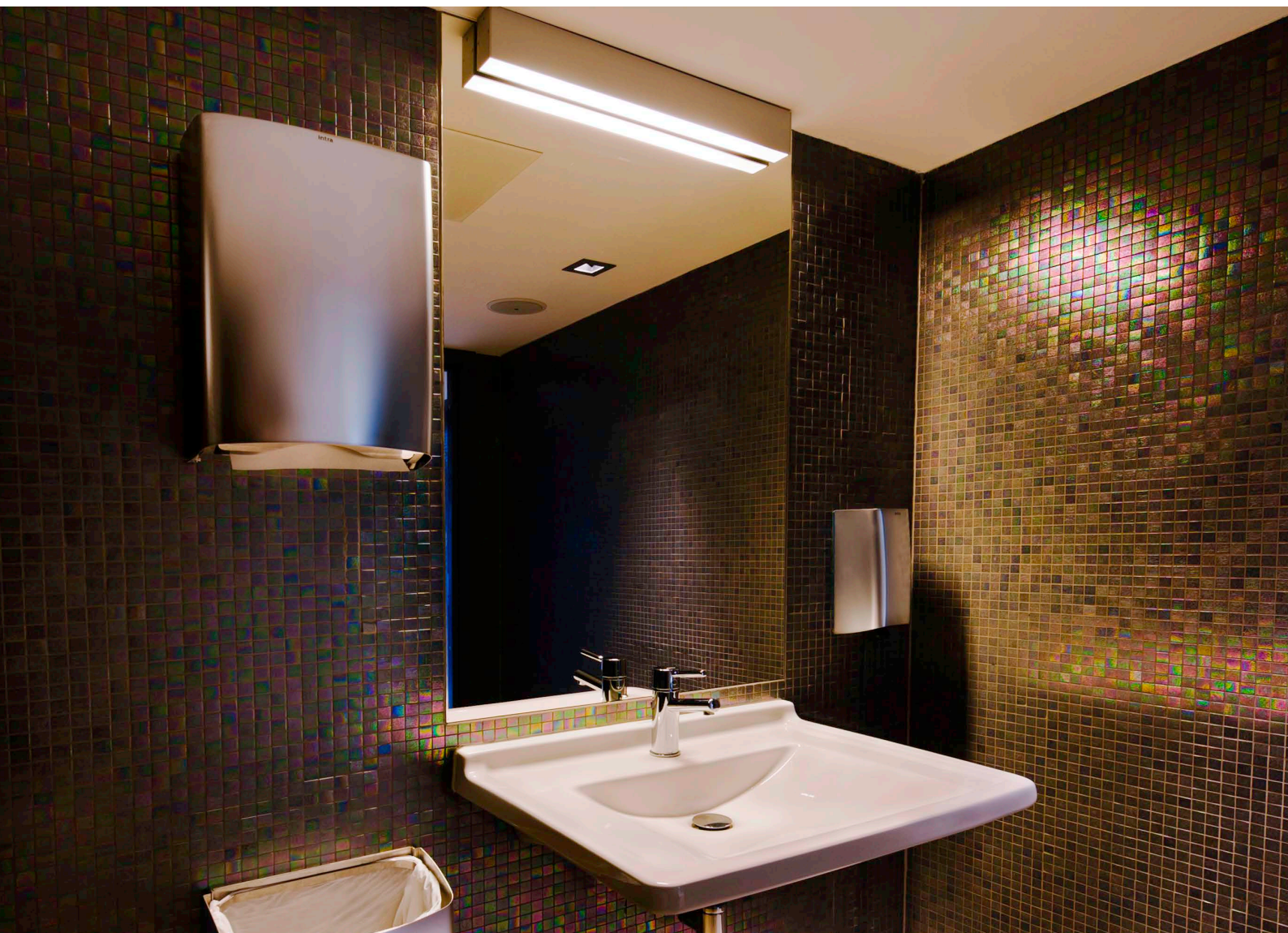


P12NFOL

New inset model of wash trough, length 1200 mm

In stainless steel . A flexible solution for using the space under-
neath the wash through. Satin finish

Millinox - sanitary room accessories



Elegance and good design

With Millinox, Odd Thorsen has created a range of products for those who value surrounding themselves with elegance and good design.

Among those who have chosen Millinox are Quality Hotel 33 in Oslo, a hotel inspired by '60s-design, music and energy, and Copenhagen's leading design hotel Skt. Petri.



Millinox - Sanitary room accessories

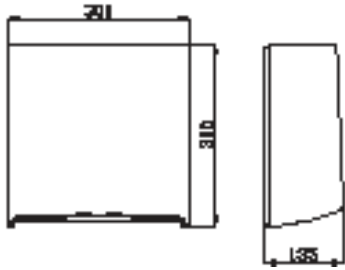
intra



Design at the forefront

Exclusive, sculptural and stylish – Millinox has a double-skinned design in satin finish.

The range was created by designer Odd Thorsen, one of Norway's foremost and most awarded product designers. Thorsen's systematic approach to design lets function and aesthetics play an equal role in all projects.



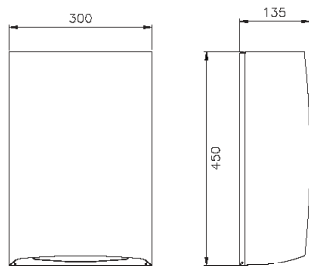
Millinox MXPMMINI

Paper dispenser

GTIN 7055570012659

Description

Satin finish stainless steel.
Supplied with adjustable paper-guides.
Material: AISI 304.



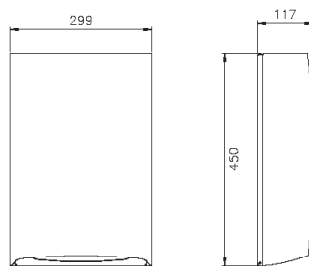
Millinox MXPM

Paper dispenser

NRF 7513118 GTIN 7055570012284

Description

Satin finish stainless steel.
Supplied with adjustable paper-guides.
Material: AISI 304.



Millinox MXP

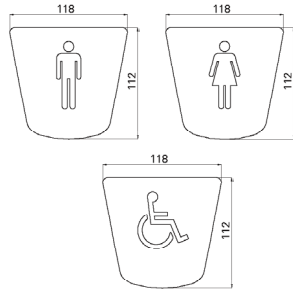
Paper dispenser

NRF 7513111 GTIN 7055570011669

Description

Satin finish stainless steel.
Specially adapted Tork Express plus.
Material: AISI 304.

Millinox - Sanitary room accessories



Millinox MXSKILTD

Door sign - female

GTIN 7055570012628

Millinox MXSKILTH

Door sign - male

GTIN 7055570012635

Millinox MXSKILTHC

Door sign - disabled

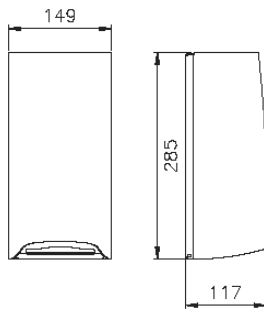
GTIN 7055570012642

Description

Satin finish stainless steel.

Overall dimensions: 118x112 mm

Material: AISI 304.



Millinox MXT1

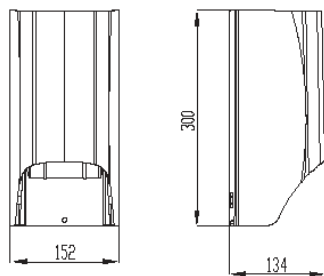
Toilet paper dispenser

NRF 7513115 GTIN 705570011706

Description

Satin finish stainless steel.

Material: AISI 304.



Millinox MXT2-100

Toilet roll holder

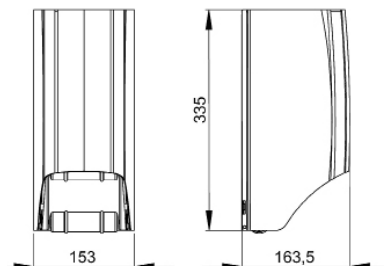
NRF 7513122 GTIN 7055570014776

Description

Satin finish stainless steel.

For two rolls (max Ø100 mm).

Material: AISI 304.



Millinox MXT2-140

Toilet roll holder

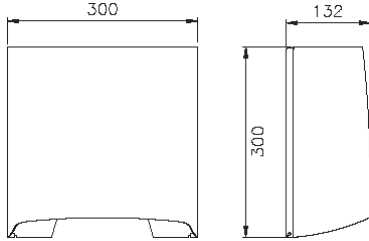
NRF 7513012 GTIN 7055570015148

Description

Satin finish stainless steel.

For two rolls (max Ø207 mm).

Material: AISI 304.



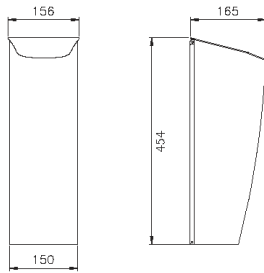
Millinox MXT4

Toilet roll holder

NRF 7513103 GTIN 7055570011768

Description

Satin finish stainless steel.
For large roll, max ø270 mm).
Material: AISI 304.



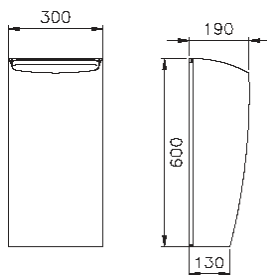
Millinox MXA1

Waste bin

NRF 7513107 GTIN 7055570011652

Description

Satin finish stainless steel.
For sanitary towels. Volume: 6.5 litres.
Material: AISI 304.



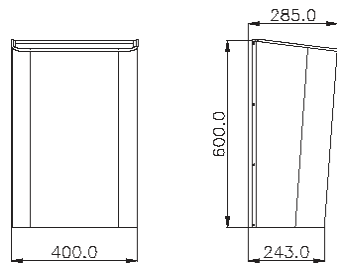
Millinox MXA3

Waste bin

NRF 7513109 GTIN 7055570011638

Description

Satin finish stainless steel.
Volume: 30 litres.
Material: AISI 304.



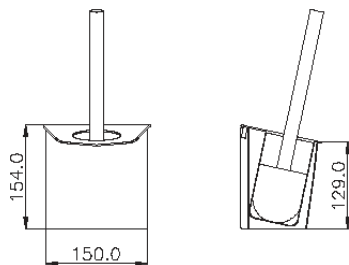
Millinox MXA5

Waste bin

GTIN 7055570012949

Description

Satin finish stainless steel.
Volume: 60 litres.
Material: AISI 304.



Millinox MXTB

Toilet brush holder

NRF 7513116 GTIN 7055570012406

Description

Satin finish stainless steel. The container lid and container can be removed for easy cleaning. Comes complete with brush in stainless steel. The brush bristles are replaceable. Material: AISI 304.

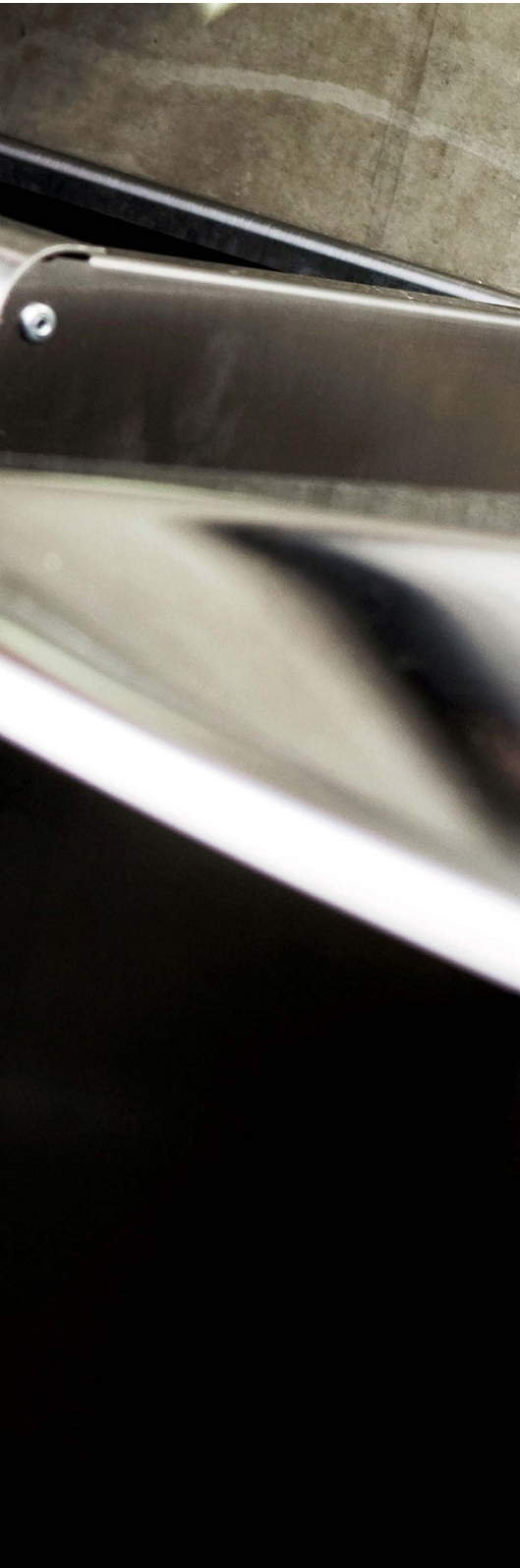
Easy - sanitary room accessories



Clean lines

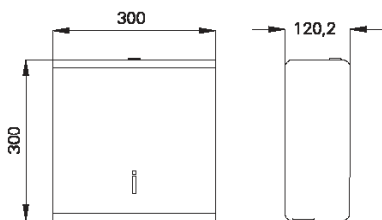
Icon is a series designed by Odd Thorsen with simple, clean lines. A brushed surface enhances the clean design.

All of the products are made from stainless steel, a durable and hygienic material that is maintenance free and easy to keep clean.



Solid and vandal-resistant Icon can be found, amongst other locations, at Oslo Central railway station.

Easy - sanitary room accessories



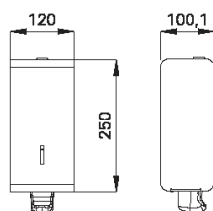
Icon ICPMM

Paper dispenser

NRF 7513004 GTIN 7055570014837

Description

Satin finish stainless steel. Suitable for all sizes of paper towel.
Material: AISI 304.



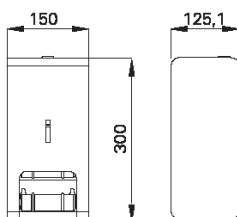
Icon ICS1M

Soap dispenser

NRF 7513005 GTIN 7055570014844

Description

Satin finish stainless steel. The dispenser comes with 1-litres plastic bottle to refill soap.
Material: AISI 304.



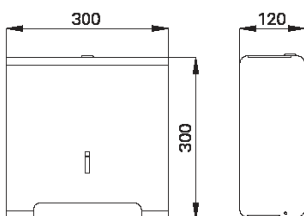
Icon ICT2

Toilet roll holder

NRF 7513007 GTIN 7055570014868

Description

Satin finish stainless steel. For two rolls (max Ø207 mm).
Material: AISI 304.



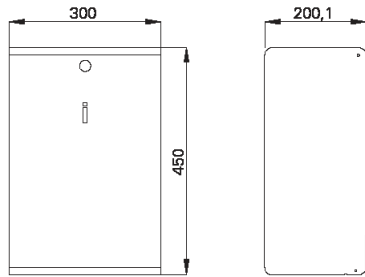
Icon ICT4

Toilet roll holder

NRF 7513008 GTIN 7055570014875

Description

Brushed stainless steel. For large roll (max Ø207 mm).
Material: AISI 304.



Icon ICA3

Waste bin

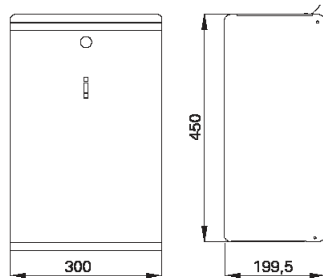
NRF 7513002 GTIN 7055570014813

Description

Brushed finish stainless steel. Volume: 27 litres.

Waste bin with lid.

Material: AISI 304.



Icon ICA3H

Waste bin for sanitary towels

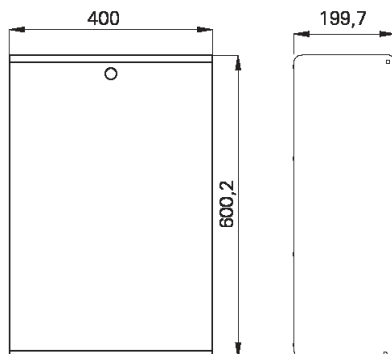
NRF 7513011 GTIN 7055570014950

Description

Polished stainless steel with lid and plastic internal waste bucket. Volume: 12 litres.

Material: AISI 304.

The container comes with a lid



Icon ICA5

Waste bin

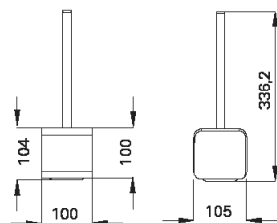
NRF 7513003 GTIN 7055570014820

Description

Brushed stainless steel. Volume: 48 litres.

Waste bin with lid.

Material: AISI 304.



Icon ICTB

Toilet brush holder

NRF 7513009 GTIN 7055570014882

Description

Brushed stainless steel. Supplied with brush and stainless steel handle.

Container can be removed for cleaning. The brush bristles are replaceable.

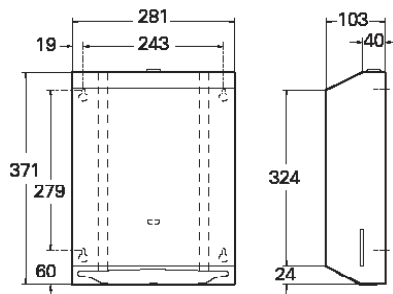
Material: AISI 304.

Easy - sanitary room accessories



Simple and functional

Easy is an affordable and durable series with simple, clean lines. Are products are for mounting on, or recessing, in walls. Stainless steel is hygienic and requires minimal maintenance.



Easy ASI0210

Paper dispenser

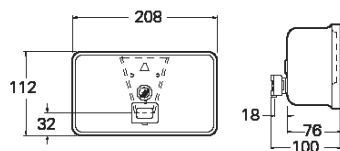
GTIN 4005683042886

Description

Satin finish stainless steel for wall mounting.

For max paper size 90x270 mm.

Material: AISI 304.



Easy ASI0345

Horizontal soap dispenser

GTIN 4005683049311

Description

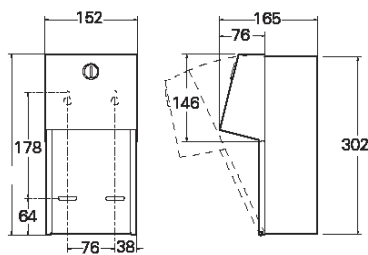
Satin finish. For wall mount. Easy filling and cleaning and with refill window.

Suitable for soap and lotion.

Volume: 1.2 litres

For paper max 90x270 mm).

Material: AISI 304.



Easy ASI0030

Double toilet roll holder

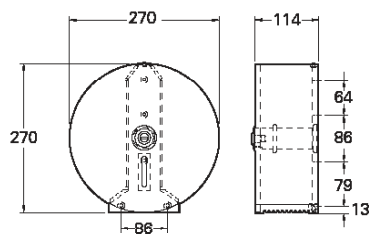
GTIN 4005683042848

Description

Satin finish stainless steel for recessed mounting in wall.

For two toilet rolls (max Ø135 mm).

Material: AISI 304.



Easy ASI0042

Large toilet roll holder

GTIN 4005683042879

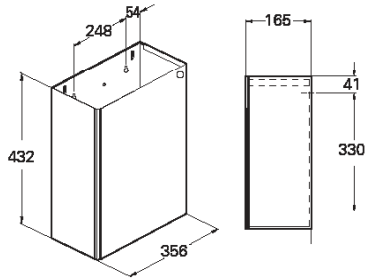
Description

Satin finish stainless steel.

Max. toilet roll size Ø254 mm.

Material: AISI 304.

Easy - sanitary room accessories



Easy ASI0828

Waste bin (medium)

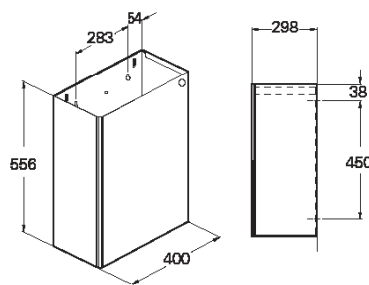
GTIN 4005683043036

Description

Satin finish stainless steel.

Volume: 25.4 litres.

Material: AISI 304.



Easy ASI0825

Waste bin (large)

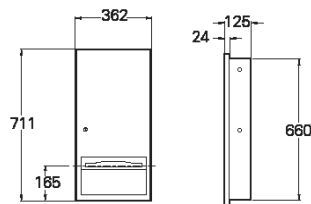
GTIN 4005683043029

Description

Satin finish stainless steel.

Volume: 66.3 litres.

Material: AISI 304.



Easy ASI9452

Recessed paper dispenser

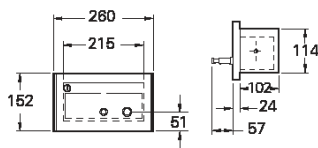
GTIN 4005683046631

Description

Satin finish stainless steel,

for recessed wall mounting

Material: AISI 304.



Easy ASI9326

Recessed soap dispenser

GTIN 4005683048932

Description

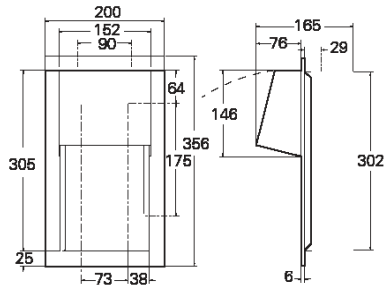
For recessed mounting in wall. Satin finish.

Stainless steel soap dispenser, mounted on the door for simple filling and cleaning.

Suitable for soap and lotion.

Volume: 1.5 litres.

Material: AISI 304.



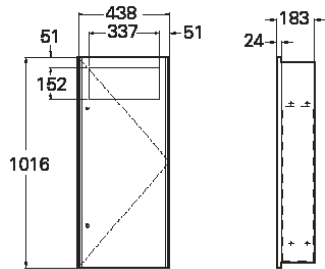
Easy ASI0031

In-cased double toilet roll holder

GTIN 4005683042855

Description

Satin finish stainless steel for recessed mounting in wall.
Material: AISI 304.



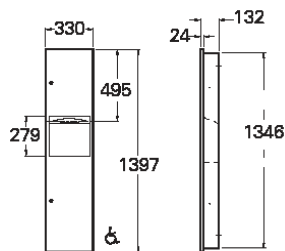
Easy ASI9474

Recessed waste bin

GTIN 4005683047201

Description

Satin finish stainless steel for recessed mounting in wall.
Volume: 45.4 litres.
Material: AISI 304.



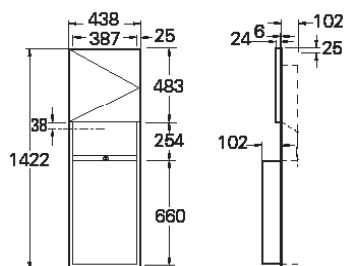
Easy ASI9467

Combined recessed paper dispenser and waste bin

GTIN 4005683046693

Description

Satin finish stainless steel for recessed mounting in wall.
Volume: 18.9 litres.
Material: AISI 304.



Easy ASI9469

Combined recessed paper dispenser and waste bin

GTIN 4005683046792

Description

Satin finish stainless steel for recessed mounting in wall.
Volume: 59 litres.
Material: AISI 304.

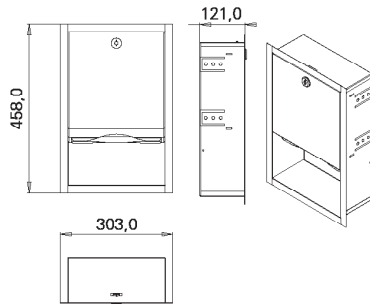
Public - sanitary room accessories





Products in the Public range can be serviced from the front or via a service room.

Public - sanitary room accessories



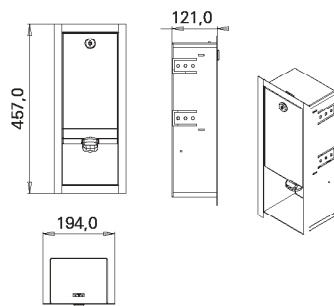
PBPM

Public soap dispenser

NRF 7513155 GTIN 7055570014011

Description

Stainless steel 18/10, matt finish.
For recessing into wall. For paper size up to 250x115 mm.



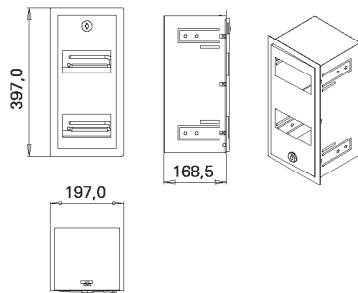
PBS1M

Public soap dispenser

NRF 7513151 GTIN 7055570014028

Description

Stainless steel 18/10, matt finish.
For recessing into wall. Supplied with 1-litre refill bottle



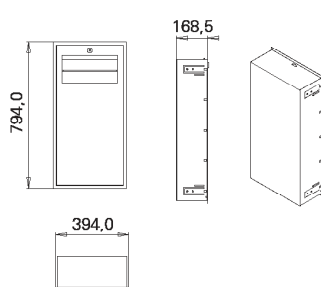
PBT2

Public toilet roll holder

NRF 7513159 GTIN 7055570014035

Description

Stainless steel 18/10, matt finish.
For recessing into wall.
Two toilet rolls (maximum Ø140 mm).



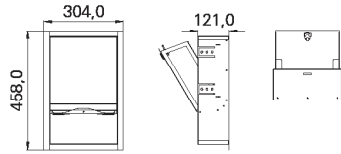
PBA5

Public waste bin

NRF 7513163 GTIN 7055570014042

Description

Stainless steel 18/10, matt finish.
For recessing into wall.
50 litres.

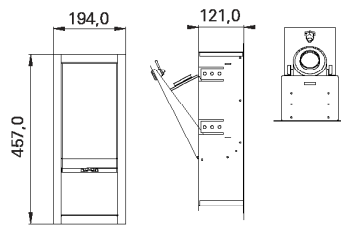


PBSPM

Public paper dispenser service room
NRF 7513157 GTIN 7055570013977

Description

Stainless steel 18/10, matt finish.
For recessing into wall.
For paper sizes up to 250x115 mm.
Refilling from back of product in service room.

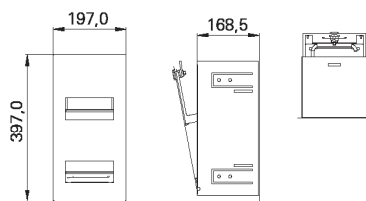


PBSS1M

Public soap dispenser service room
NRF 7513153 GTIN 7055570013984

Description

Stainless steel 18/10, matt finish.
For recessing into wall. Supplied with 1-litre refill bottle.
Refilling from rear of product in service room.

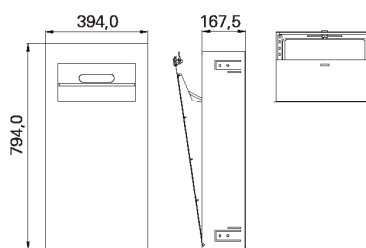


PBST2

Public toilet-roll holder service room
NRF 7513161 GTIN 7055570013991

Description

Stainless steel 18/10, matt finish.
For recessing into wall.
Two toilet rolls (maximum Ø140 mm).
Refilling from back of product in service room.



PBSA5

Public waste bin service room
NRF 7513165 GTIN 7055570014004

Description

Stainless steel 18/10, matt finish.
For recessing into wall.
50 litres.
Emptying from back of product in service room

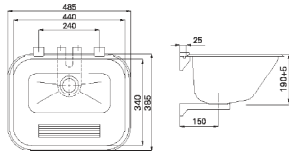
Utility sink



Bestseller since 1965

Intra washbowls look equally as good in the washroom, holiday cabin or garage, as well as in schools or hospitals. Made from tough and durable stainless steel, the sinks are polished several times to achieve a shiny and lasting finish.

Intra utility sinks have been a bestseller since 1965, and come in three sizes. We also have a separate model for industrial/agricultural use. Some models can be supplied with a practical drainer tray.

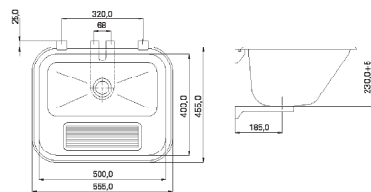


VK44STD

Utility sink in 18/10 stainless steel
NRF 6321813 GTIN 7055570000502

Description

Wall mounting with brackets, without overflow and waste.
Dimensions: 22 litres. Variant: With hole for overflow.

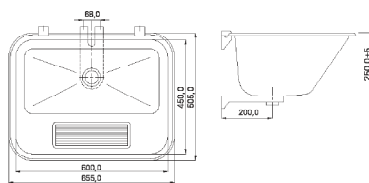


VK50STD

Utility sink in 18/10 stainless steel
NRF 6321819 GTIN 7055570000632

Description

Wall mounting with brackets, without overflow and waste.
Dimensions: 34 litres. Variant: With 1 1/2" waste with plug and chain and drainer tray VKRIST.
Variant: With hole for overflow. Optional extras: Drainer tray.

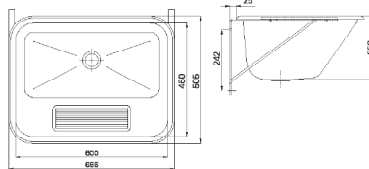


VK60STD

Utility sink in 18/10 stainless steel
NRF 6321826 GTIN 7055570000793

Description

Wall mounting with brackets, without overflow and waste.
Dimensions: 47 litres. Variant: With hole for overflow. Optional extras: Drainer tray.

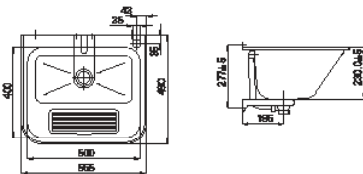


VK60LB Industrial/Agricultural

Utility sink in 18/10 stainless steel
NRF 6321827 GTIN 7055570000502

Description

Wall mounting with brackets, without hole for overflow, with 1 1/4" ball-valve with grated waste.
Dimensions: 47 litres. Optional extras: Drainer tray.

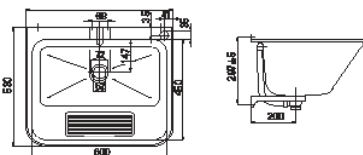


VK50S1R

Utility sinks in stainless steel
GTIN 70555700015292

Description

Wall mounting with support bracket. Comes with 1 1/2" plug and chain with overflow. Turned up at rear edge. Supplied with hole for mixer tap on right side.
Dimensions: 34 litres. Optional extras: Drainer tray.



VK60S1R

Utility sinks in stainless steel
GTIN 70555700015162

Description

Wall mounting with support bracket. Comes with 1 1/2" plug and chain with overflow. Turned up at rear edge. Supplied with hole for mixer tap on right side.
Dimensions: 47 litres. Optional extras: Drainer tray.

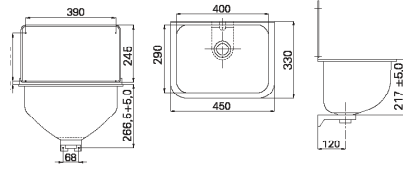
Bucket sinks



Easy to install

Practical and hygienic bucket sinks with easy fixing system that ensures stable, secure attachment to the wall. A wall panel protects the wall from water staining.

Our products are stainless steel, an eco-friendly and durable material.



GUB1

Bucket sink in stainless steel

NRF 6320003 GTIN 7055570001059

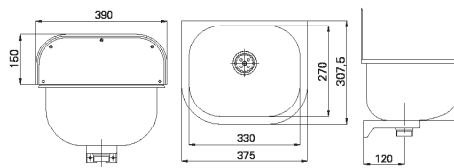
Description

For wall mounting. Supplied with wall panel, support bracket and 1 ½" with grated waste.

Variants: GUB2. Includes bucket grid.

GUB3. Ø100 mm grated waste and bucket grid.

Delivered with waste and wall bracket pre-fitted.



U1STD

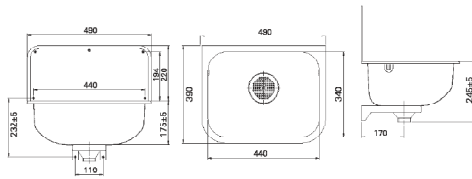
Bucket sink in stainless steel 18/10

NRF 6320033 GTIN 7055570001172

Description

Bucket sink in stainless steel 18/10 with wall panel.

1 ½" with grated waste.



U2STD-1

Bucket sink in stainless steel 18/10

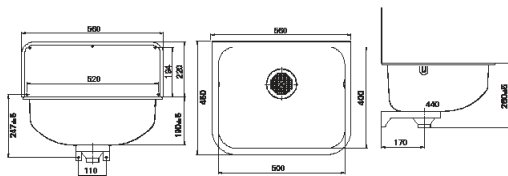
NRF 6320072 GTIN 7055570014066

Description Accessories

Bucket sink in stainless steel 18/10 With wall panel. URIST2-1 2" with grated waste.

Bucket grid for U2STD

NRF 6320073 GTIN 7055570014073



U4STD-1

Bucket sink in stainless steel 18/10

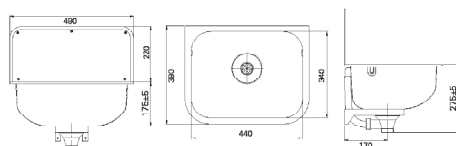
NRF 6320071 GTIN 7055570014080

Description Accessories

Bucket sink in stainless steel 18/10 With wall panel. URIST4-1 2" with grated waste.

Bucket grid U4STD-1

NRF 6320074 GTIN 7055570014097



L1

Laboratory sink in stainless steel 18/10

NRF 6320083 GTIN 7055570001127

Description

Laboratory sink in stainless steel 18/10 with backwash

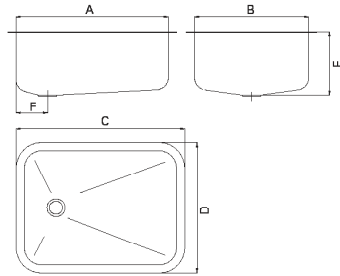
1 ½" waste with plug and overflow.

Bowls



Basins

Intra offers a wide selection of single bowls for welding, wall mount and for inset. Contact Intra for more information:
www.intra-teka.com

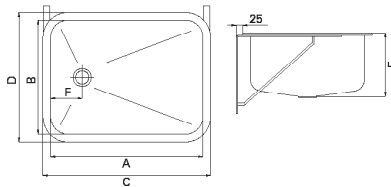


Bowl for welding

Description

Stainless steel sink 18/10 for welding.
Polished inside and out.
Without waste. Hole for overflow on request.

See table on next page.

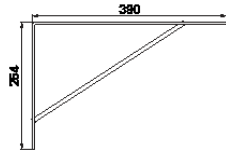


Wall-mounted bowl

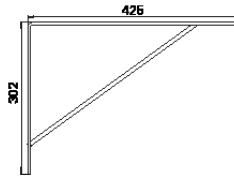
Description

Sinks in stainless steel 18/10 for wall mounting, with epoxy-coated brackets and 1 1/2" bath outflow with plug and chain, plus overflow.

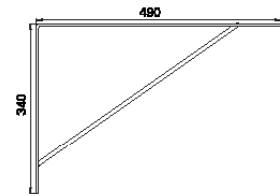
See table on next page.



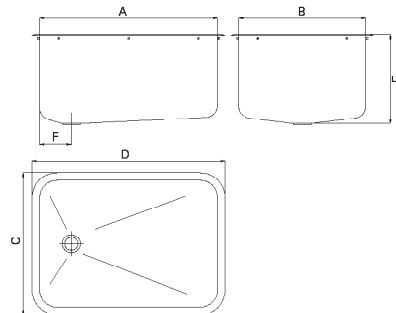
Console SK 50



Console SK 60



Console SK 70



Commercial bowls for inset mounting

Description

Wash basin in stainless steel 18/10 for inset into metal bench with fixing clips and 1 1/2" outlet with plug and chain, plus overflow.
Sealant not included.

See table on next page.

Bowls for welding

Welding Overall dimensions Depth Material thickness Waste Corner (mm) (mm) (mm) dimension placement Radius

L14130D-02	140x320	130	AISI304	0,7 mm	Ø52 mm	Plug	C	R80
L15M120E-97-021	150x344	120	AISI304	0.9 mm	Ø97 mm	Basket waste	C	R50
L15MK120E-97-021	150x344	120	AISI304	0.9 mm	Ø97 mm	Basket waste	CK	R50
L15CLUB EXECUTIVE ROOM01-97-021	150x344	120	AISI304	1.25 mm	Ø97 mm	Basket waste	CK	R50
L16-02	160x415	120	AISI304	0.7 mm	Ø97 mm	Basket waste	C	R80
L18M160D-02	180x380	160	AISI304	0.7 mm	Ø52 mm	Plug	C	R60
L18M160D-021	180x380	160	AISI304	0.7 mm	Ø52 mm	Plug	C	R60
L18M160D-97-02	180x380	160	AISI304	0.7 mm	Ø97 mm	Basket waste	C	R60
L18M160D-97-021	180x380	160	AISI304	0.7 mm	Ø97 mm	Basket waste	C	R60
L22160D-03	220x400	160	AISI304	0.7 mm	Ø52 mm	Grate	70 mm	CK R80
LS22160D-02	220x400	160	AISI316	0.9 mm	Ø52 mm	Rist	70 mm	CK R80
L24MK160D-02	240x340	160	AISI304	0.7 mm	Ø52 mm	Plug	CK	R80
L24MK160D-021	240x340	160	AISI304	0.7 mm	Ø52 mm	Plug	CK	R80
L29160D-02	290x400	160	AISI304	0,7 mm	Ø52 mm	Plug	CK	R80
L29160D-021	290x400	160	AISI304	0.9 mm	Ø52 mm	Plug	CK	R80
LS29160D-021	290x400	160	AISI316	0.9 mm	Ø52 mm	Plug	CK	R80
L29160D-03	290x400	160	AISI304	0.7 mm	Ø52 mm	Grate	70 mm	CK R80
LS29160D-03	290x400	160	AISI316	0.7 mm	Ø52 mm	Grate	70 mm	CK R80
L30MK175E-97-021	300x344	175	AISI304	0.9 mm	Ø97 mm	Basket waste	CK	R70
L34M160D-02	339x436	160	AISI304	0.7 mm	Ø52 mm	Plug	CL	R85
L34M160D-021	339x436	160	AISI304	0.7 mm	Ø52 mm	Plug	CL	R85
L34M160D-97-02	339x436	160	AISI304	0.7 mm	Ø97 mm	Basket waste	CL	R85
L34M160D-97-021	339x436	160	AISI304	0.7 mm	Ø97 mm	Basket waste	CL	R85
L345-021	345x415	160	AISI304	0.7 mm	Ø97 mm	Basket waste	C	R80
L34M160D-97-02	339x436	160	AISI304	0.7 mm	Ø97 mm	Basket waste	CL	R85
L34M160D-97-021	339x436	160	AISI304	0.7 mm	Ø97 mm	Basket waste	CL	R85
L34M160D-97-021	339x436	160	AISI304	0.7 mm	Ø97 mm	Basket waste	CL	R85
L37MK160D-021	340x370	160	AISI304	0.7 mm	Ø52 mm	Plug	CK	R80
L40MK160D-02	350x400	160	AISI304	0.7 mm	Ø52 mm	Plug	CK	R80
L40MK160D-021	350x400	160	AISI304	0.7 mm	Ø52 mm	Plug	CK	R80
LS40MK160D-02	350x400	160	AISI316	0.9 mm	Ø52 mm	Plug	CK	R80
L40M160D-021	350x400	160	AISI304	0.7 mm	Ø52 mm	Plug	CL	R80
L41MK175E-97-02	344x410	175	AISI304	0.9 mm	Ø97 mm	Basket waste	CK	R50/R70
L41MK175E-97-021	344x410	175	AISI304	0.9 mm	Ø97 mm	Basket waste	CK	R50/R70
L41CLUB EXECUTIVE ROOM03-021	344x410	200	AISI304	1.25 mm	Ø97 mm	Basket waste	CK	R50/R70
L44220D-021	400x400	220	AISI304	0,9 mm	Ø52 mm	Plug	CK	R80
BA3013-R31	260x300	135	AISI304	0.8 mm	Ø52 mm	Plug	CK	R50
BA340-R41	340x300	145	AISI304	0.9 mm	Ø52 mm	Plug	CK	R50
BA400-R41	400x340	145	AISI304	0.9 mm	Ø52 mm	Plug	CK	R80
BA400-R42	400x340	145	AISI304	0.9 mm	Ø97 mm	Basket waste	CK	R80
BA400-S31	400x340	145	AISI316	0.9 mm	Ø52 mm	Plug	CK	R80
PlugBA480-R41	480x340	145	AISI304	0,9 mm	Ø52 mm	Plug	CK	R80
BA480-R42	480x340	145	AISI304	0.9 mm	Ø97 mm	Basket waste	CK	R80
BA480-R41	480x340	145	AISI304	0.9 mm	Ø52 mm	Plug	CK	R80
BA5016-R41	500x400	160	AISI304	0.9 mm	Ø52 mm	Plug	CK	R70
BA5016-R42	500x400	160	AISI304	0.9 mm	Ø97 mm	Basket waste	CK	R70
LA500-021	500x400	200	AISI304	0.9 mm	Ø97 mm	Basket waste	CK	R70
BC313-R316	Ø313	150	AISI304	0.8 mm	Ø52 mm	Plug	C	
BC313-R35	Ø313	150	AISI304	0.8 mm	Ø97 mm	Basket waste	C	
BC380-R41	Ø380	155	AISI304	0.8 mm	Ø52 mm	Plug		
BC380-R42	Ø380	155	AISI304	0.8 mm	Ø97 mm	Basket waste		
LBE50-021	500x400	200	AISI304	0.9 mm	Ø52 mm	Grate	70 mm	C R70
LBEX50-021	500x400	200	AISI304	0.9 mm	Ø97 mm	Basket waste	C	R70
LSBE50-021	500x400	200	AISI316	0,9 mm	Ø52 mm	Grate	70 mm	C R70
SK27	INSV 330x270	180	AISI304	0.9 mm	Ø52 mm	Plug	CL	R95
SK5020	INSV 500x400	200	AISI304	0.9 mm	Ø52 mm	Plug	C/CK	R70
SK5030	INSV 500x400	300	AISI304	1.25 mm	Ø52 mm	Plug	CL	R70
SK5525	INSV 550x550	250	AISI304	1.0 mm	Ø52 mm	Plug	CL	R70
SK5525	INSV 550x550	250	AISI304	1.0 mm	Ø52 mm	Plug	CL	R70
SK5525	INSV 550x550	250	AISI304	1.0 mm	Ø52 mm	Plug	CL	R70
SK7030	INSV 700x500	300	AISI304	1.25 mm	Ø52 mm	Plug	CK	R70

Wall-mounted bowls

Wall mounting A B C D E F

SK 50/20 500 400 560 460 200 125

Item no. : SK5020 WALL

NRF-no. : 6320606

GTIN: 7055570001554

SK 50/30 500 400 560 460 300 125

Item no. : SK5030 VEGG

NRF-no.: 6320616

GTIN: 7055570001585

SK 60/25 600 450 660 510 250 125

Item no. : SK5030 VEGG

NRF-no.: 6320626

GTIN: 7055570001639

SK 60/30 600 450 660 510 300 125

Item no. : SK5030 VEGG

NRF-no.: 6320636

GTIN: 7055570001660

SK 70 % / 30 % 700 500 760 560 300 125

Item no. : SK5030 VEGG

NRF-no.: 6320656

GTIN: 7055570001714

Commercial bowls for inset mou

Inset A B C D E F

SK 27/18 without overflow 270 330 310 370 180 110

Item no. : SK27NEDFUOVL

NRF-no. : 6320694

GTIN: 7055570001431

SK 27/18 270 330 310 370 180 110

Item no. : SK27NEDFUOVL

NRF-no. : 6320696

GTIN: 7055570001424

SK 50/20 500 400 560 460 200 125

Item no. : SK5030NEDF

NRF-no. : 6320604

GTIN: 7055570001516

SK 50/30 500 400 560 460 300 125

Item no. : SK5030NEDF

NRF-no. : 6320614

GTIN: 7055570001578

SK 60/25 600 450 660 510 250 125

Item no. : SK5030NEDF

NRF-no. : 6320624

GTIN: 7055570001622

SK 60/30 600 450 660 510 300 125

Item no. : SK5030NEDF

NRF-no. : 6320634

GTIN: 7055570001653

SK 70 % / 30 % 700 500 760 560 300 125

Item no. : SK5030NEDF

NRF-no. : 6320654

GTIN: 7055570001684

Sanitary room accessories



The little extra

Ensure that the toilet roll holders, mirrors and coat hooks are in keeping with the rest of the sanitary room. Elegant and minimalist in a brushed matt finish from Intra.

Style is achieved without compromise in durability. All our products are vandal-resistant.



TBTOA-FU

Exclusive toilet roll holder

GTIN 4005683709512

Description

18/10 stainless steel. Matt finish.
Tubular rail for one standard toilet roll
Max width 100 mm.
External dimension in mm 125 x 115 x 30.
Material: AISI 304.



TBHOOK-EX

Exclusive coat hook

GTIN 4005683709017

Description

18/10 stainless steel. Matt finish.
Wall-mounted coat hook.
Exterior dimensions in mm 45x Ø20.
Material: AISI 304.



TBMIRROR1

Public mirror

NRF 7513089 GTIN 4005683730042

Description

18/10 stainless steel.
Vandal-resistant 600x500mm with concealed fixing.
Material: AISI 304.

Grab bar for disabled use

Practical Grab bar for use in sanitary room or outdoors.



TBADP-001



Shower seat

GTIN 8421152074589

Description

18/10 stainless steel.
Folding chair for shower/bath.
Length: 380 mm. Depth: 395 mm.



TBBP-001



Grab bar - left

GTIN 8451152074442

TBBP-002



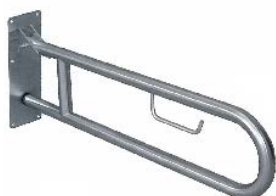
Grab bar - right

GTIN 8451152074459

Description

18/10 stainless steel.
Grab bar for seat, WC, bidet and washstand.
Length: 825 mm. Width: 153 mm.

Sanitary room accessories



TBBP-005

Hinged Grab bar
GTIN 8421152074435

Description

18/10 stainless steel.
Hinged Grab bar for WC, bidet and washstand.
With toilet roll holder
Length: 795 mm.



TBBP-006

Corner Grab bar
GTIN 8421152074480

Description

18/10 stainless steel.
Corner Grab bar for shower and bath.
762mm out from the corner in each direction.



TBBP-007

GTIN 8421152074558

TBBP-008

GTIN 8421152074565

TBBP-009

GTIN 8421152074572

Horizontal/Vertical Grab bar

Description

Stainless steel 18/10.
TBBP-007 Length: 305 mm.
TBBP-008 Length: 457 mm
TBBP-009 Length: 760 mm



TBBP-001

Grab bar
GTIN 8421152074497

Description

Grab bar for shower, 135° angle, to wall.
18/10 stainless steel. Ø30 mm.
Dimensions: 306 mm x 459 mm.



TBBP-012 - left

GTIN 8421152074541

TBBP-013 - right

GTIN 8421152074534

Grab bar

Description

18/10 stainless steel. 90° Grab bar for WC, bidet and washstand. Dimensions: 306 mm x 459 mm.



TBBP-014 - left

GTIN 8421152074466

TBBP-013 - right

GTIN 8421152074473

Support rail for WC/washstand

Description

18/10 stainless steel. Ø30 mm. Grab bar wall to floor for WC/washstand.
Dimensions: 825 mm x 900 mm.





Public sanitary areas are visited by a high volume of people every day. It places great demands on the room, of solutions, and of those of us who develop them. Intra's ambition is to raise the standard of public sanitary areas.

