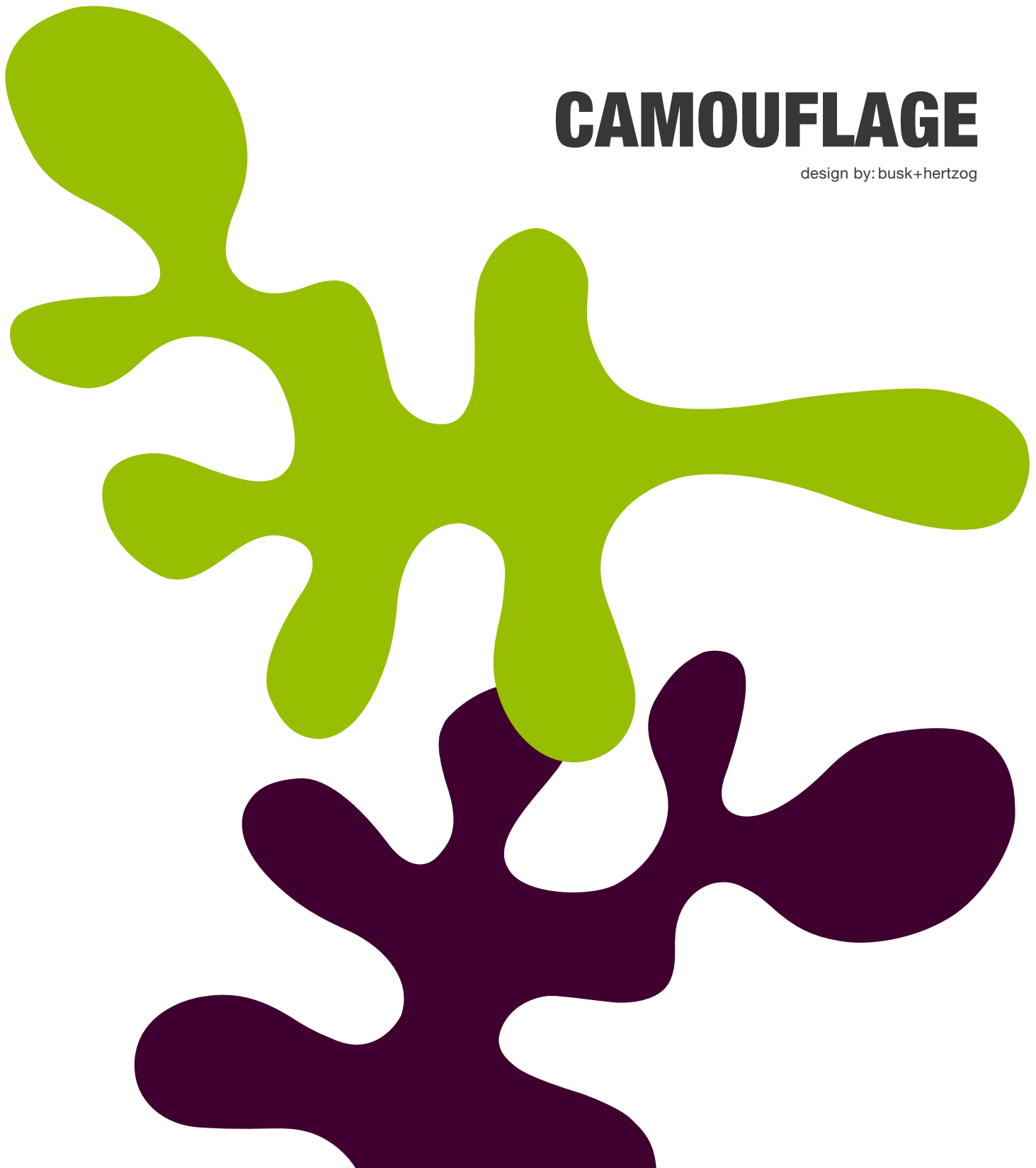


 **FROST**

CAMOUFLAGE

design by: busk+hertzog

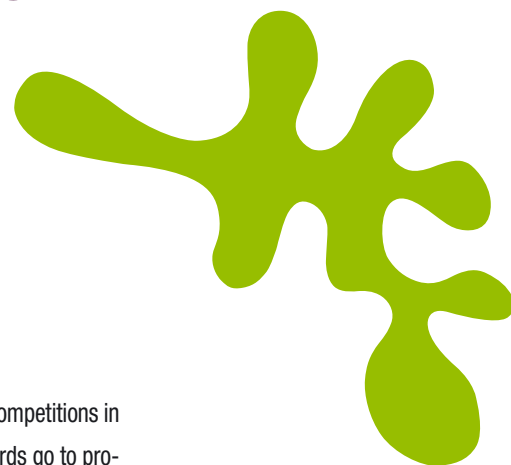
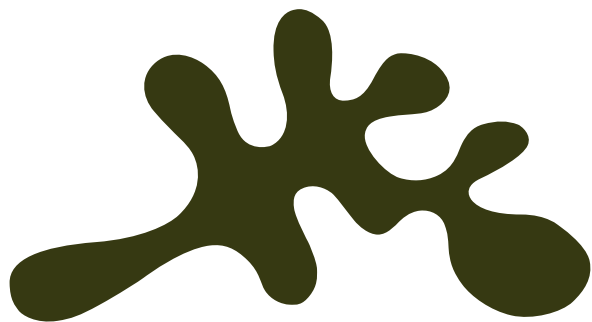




busk+hertzog

Camouflage is the work of the prize-winning Danish design duo busk+hertzog. Designs by Flemming Busk and Stephan B. Hertzog are characterised by pure, uncluttered lines and a simple, direct idiom. Believing that anything decorative should also have a function, busk+hertzog elegantly combines practicality with exclusive design.

Since the company was founded in 2000, busk+hertzog designs have won countless awards both in Denmark and abroad. They can be seen all over the world – everywhere from major international airports to the players' lounge of Chelsea Football Club. Several busk+hertzog designs are on permanent display at the Danish Museum of Art and Design, and 18 of their chairs were included at the reopening of the Museum of Modern Art in New York in 2004.

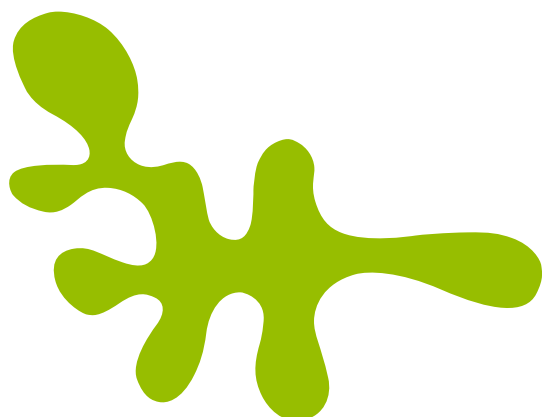


**reddot design award
winner 2008**

The Red Dot Design Award is one of the largest international design competitions in the world, with over 10,000 submissions from 60 countries. The awards go to products that feature sublime quality and innovative design, and is regarded worldwide as a substantial indicator of quality and as proof that a winner can be numbered among the contemporary design elite. The international jury consists of well-known designers and design experts from around the world, who judge the designs on criteria that include innovation, function and quality.

The products that win these awards are exhibited at the red dot design museums in Germany and Singapore, which are visited by more than 120,000 people every year.

Read more at red-dot.org



DESIGNPREIS
2009

NOMINEE



product
design
award

2009

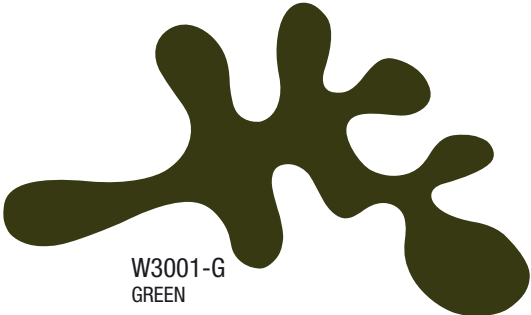


CAMOUFLAGE No need to hide

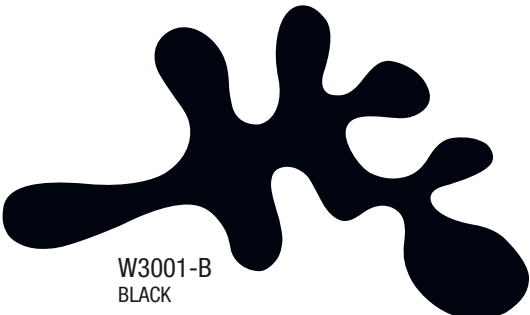
Camouflage is for people brave enough to stand out from the crowd. It makes a clear statement that you don't hide away in your shell – and that you dare to go against the flow and rebel against tradition. This award-winning busk+hertzog design helps you show your true colours.

Camouflage has a three-dimensional effect, because each Camouflage shape can be mounted at three different distances from the wall. This means it's up to you to choose the combination of shapes, where they are placed, and their height from the chosen surface.

Available in packs with either one or three Camouflage shapes in white, plum, black, green, lime, dark grey as well as brushed or polished chrome.



W3001-G
GREEN



W3001-B
BLACK



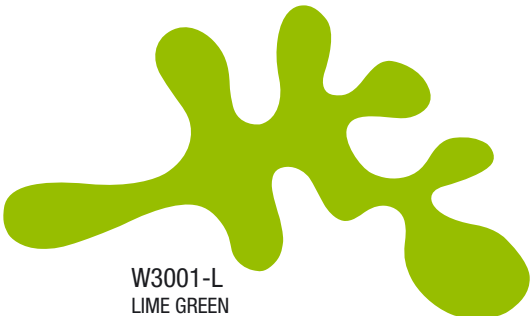
W3001
STAINLESS



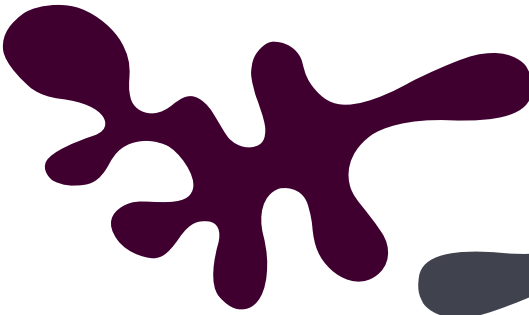
W3001-M
MIRROR/POLISHED



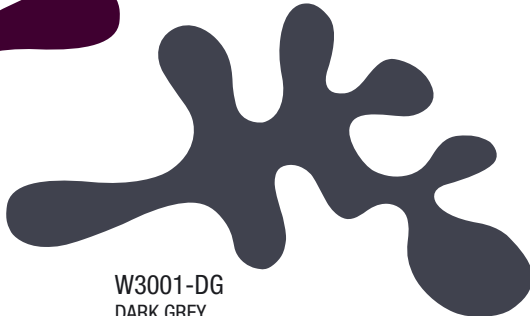
W3001-W
WHITE



W3001-L
LIME GREEN



W3001-P
PLUM



W3001-DG
DARK GREY

Single pack supplied with two 65 mm spacers.
35 mm and 50 mm spacers available separately.



35 mm

50 mm

65 mm

NO NEED



TO HIDE





CAMOUFLAGE

design by:
busk+hertzog



W3001-3
BLACK / DARK GREY / WHITE



W3001-2
GREEN / PLUM / LIME GREEN



W3001-1
BLACK / WHITE / PLUM

The pack of three is supplied with three sets of spacers, in lengths of 35 mm, 50 mm and 65 mm. Spacers are also available separately.